



Railroad Commission of Texas Brownfields Response Program

Dr. Andrea (Andy) Piñon
Brownfield Response Program Coordinator
Site Remediation Section | Oil & Gas Division



Presentation Outline



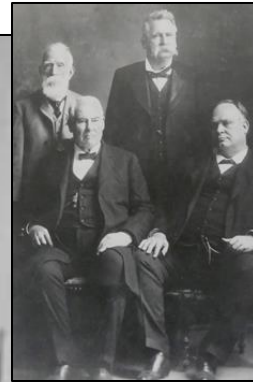
- Introduction and Background
- Brownfield Response Program
 - Overview
 - Jurisdictional Differences
 - Eligibility
 - Process
- Success Stories
- Brownfield Response Program Resources
- Important Contact Information



Introduction and Background (1 of 1)



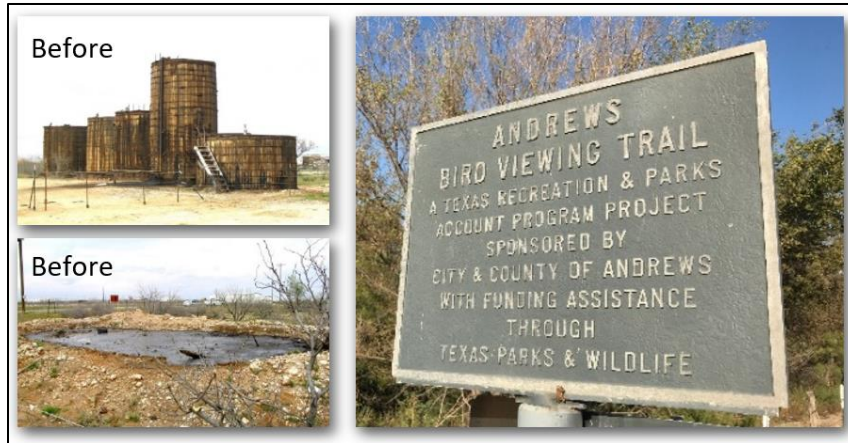
- RRC History:
 - Created in April 1891
 - Texas regulatory agency over the rates & operations of railroads, terminals, wharves, and express companies.
 - 1971- Pipeline Petroleum Law: RRC begins regulating energy
 - 1919 - Oil & Gas Conservation Law
- 2005:
 - Texas Rail Division transferred to Texas Department of Transportation



Brownfield Response Program (1 of 11)



Brownfield Response Program: Overview (2 of 11)



- **Mission:** To incentivize the remediation of Texas properties contaminated by oil and gas activities.
- **Provides:**
 - Environmental site assessments – Phase I/II ESA, site-specific
 - Limited Cleanups
- **Goals:** Protect the environment, create jobs, and revitalize communities by increasing property values and tax revenue.
- **Federally funded: EPA**



Jurisdictional Differences

Exploration

Production

Consumption



RRC Exploration & Production:

- Facilities & equipment – oil/gas well, etc.
- Waste & contamination – Crude oil (raw product)



TCEQ Distribution & Consumption:

- Facilities & equipment – Gas stations, etc.
- Waste & contamination – Refined oil (processed product)

Brownfield Response Program: Jurisdiction (4 of 11)



Exploration

Production

Consumption

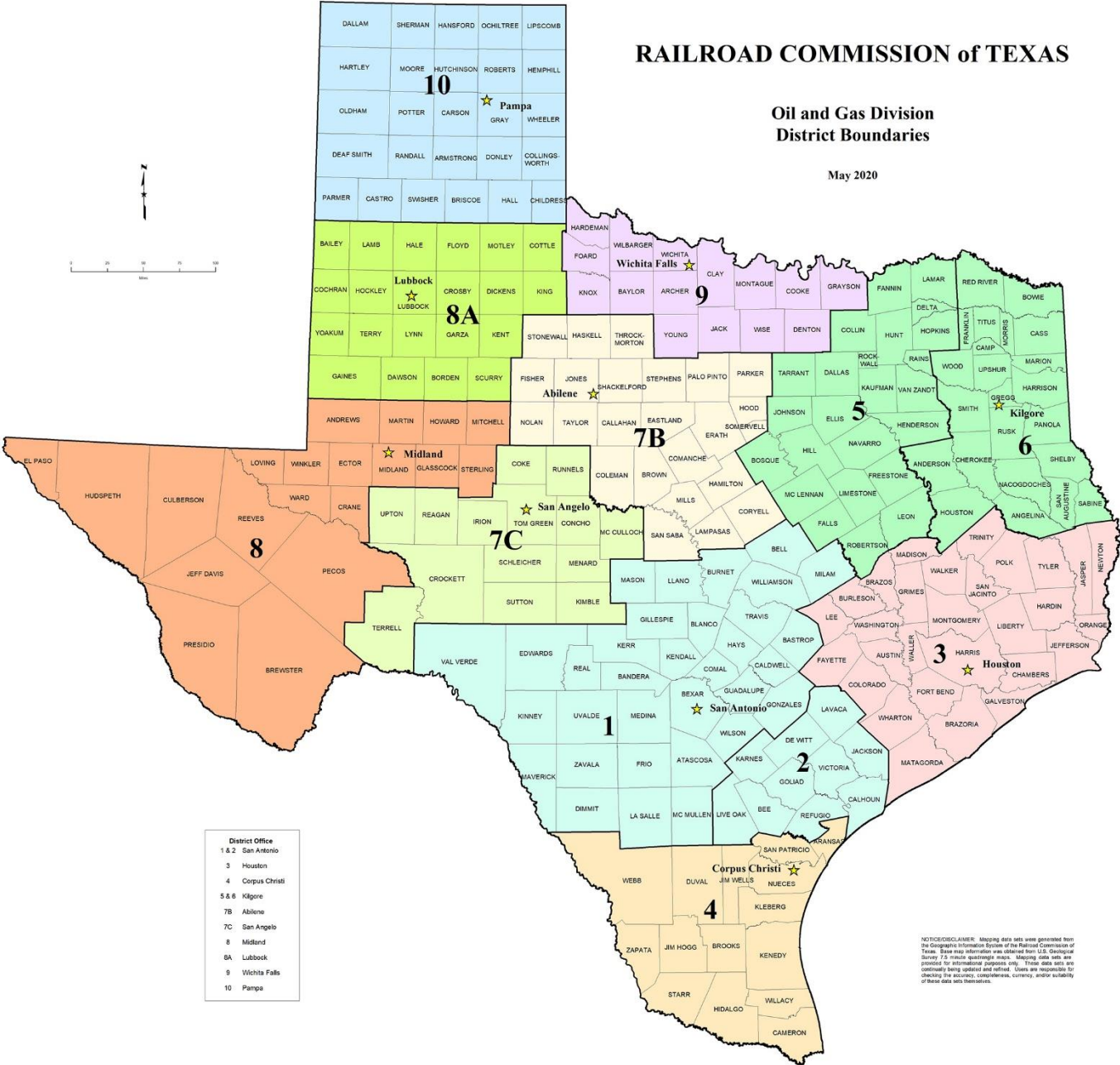


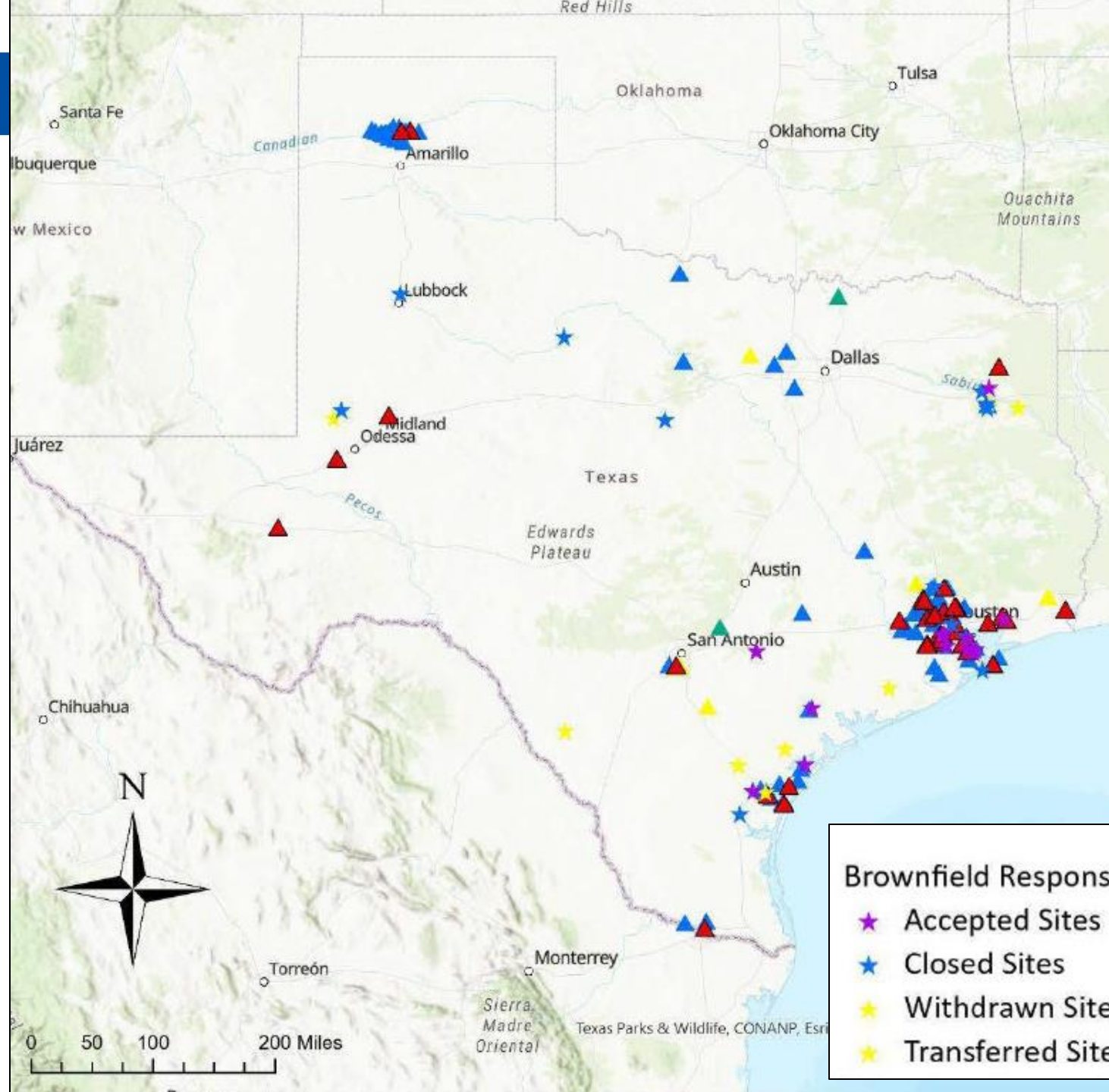


RAILROAD COMMISSION of TEXAS

Oil and Gas Division District Boundaries

May 2020





Brownfield Response Program

- ★ Accepted Sites
- ★ Closed Sites
- ★ Withdrawn Sites
- ★ Transferred Sites



Applicant Eligibility:

- State, local, and tribal governments
- Non-profit organizations
- Quasi-governmental agencies
- Private landowners with community-supported projects
- Universities and school districts
- Economic Development Corporations



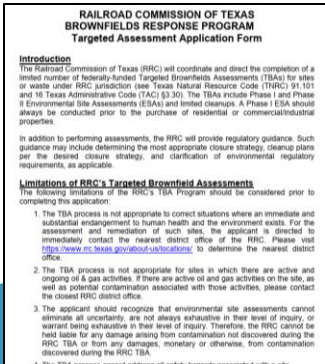


Site Eligibility:

1. A redevelopment plan for the property
2. Oil & Gas operations on the property have been abandoned and there is no responsible party for cleanup
3. No unresolved federal or state enforcement on the property
4. Applicant and landowner agree to cooperate with RRC



Brownfield Response Program: Process (9 of 11)



Application
Review



Phase I
ESA



Phase II
ESA

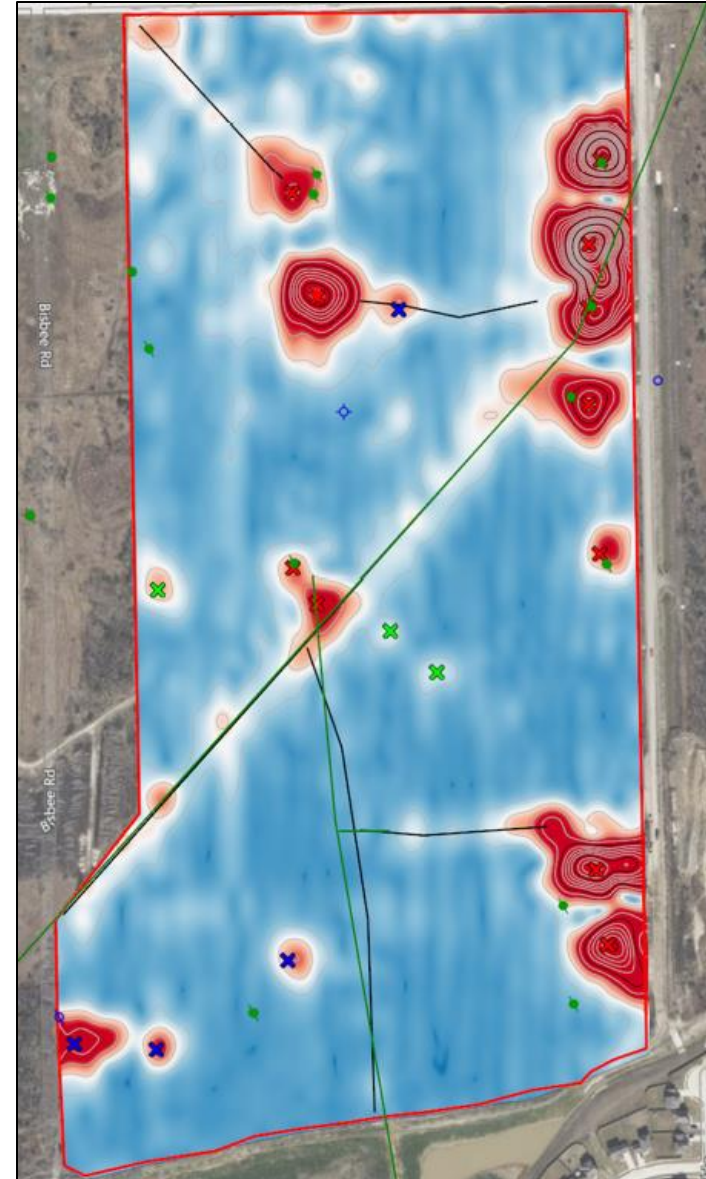
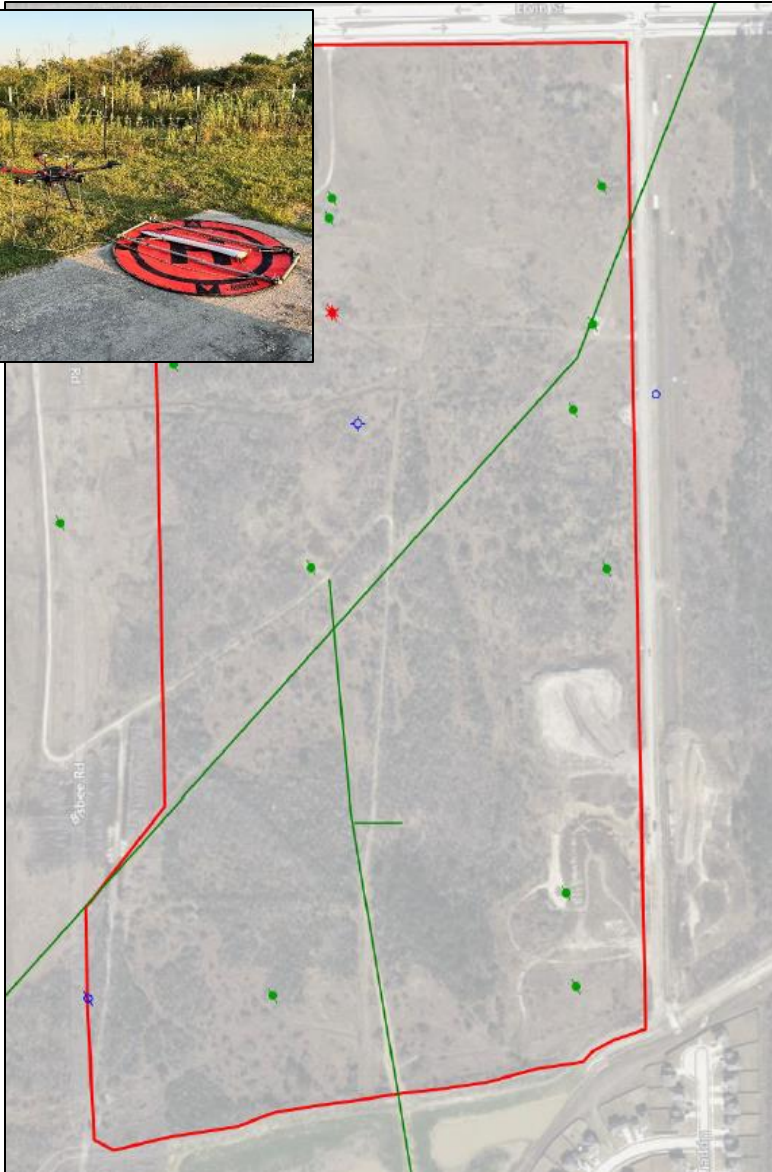


Cleanup

Additional Environmental Assessments/Surveys

- Soil and groundwater sampling
- Targeted sampling - detection of recognized environmental conditions (REC), contaminants of concern (COC)

Brownfield Response Program: Process (10 of 11)



Brownfield Response Program: Process (11 of 11)



- Brownfield Application:
 - [RRC Brownfield Application Form](#)
 - Free to apply
 - Forms and RRC website accessible in English and Spanish
 - Accepting applications on an ongoing basis
- Helpful Resources:
 - Frequently Asked Questions (RRC BRP Website)
 - KSU TAB
 - RRC BRP Staff
 - RRC GIS Viewer

RAILROAD COMMISSION OF TEXAS BROWNFIELDS RESPONSE PROGRAM Targeted Assessment Application Form

Introduction

The Railroad Commission of Texas (RRC) will coordinate and direct the completion of a limited number of federally-funded Targeted Brownfields Assessments (TBAs) for sites or waste under RRC jurisdiction (see Texas Natural Resource Code (TNRC) 91.101 and 16 Texas Administrative Code (TAC) §3.30). The TBAs include Phase I and Phase II Environmental Site Assessments (ESAs) and limited cleanups. A Phase I ESA should always be conducted prior to the purchase of residential or commercial/industrial properties.

In addition to performing assessments, the RRC will provide regulatory guidance. Such guidance may include determining the most appropriate closure strategy, cleanup plans per the desired closure strategy, and clarification of environmental regulatory requirements, as applicable.

Limitations of RRC's Targeted Brownfield Assessments

The following limitations of the RRC's TBA Program should be considered prior to completing this application:

1. The TBA process is not appropriate to correct situations where an immediate and substantial endangerment to human health and the environment exists. For the assessment and remediation of such sites, the applicant is directed to immediately contact the nearest district office of the RRC. Please visit <https://www.rrc.texas.gov/about-us/locations/> to determine the nearest district office.
2. The TBA process is not appropriate for sites in which there are active and ongoing oil & gas activities. If there are active oil and gas activities on the site, as well as potential contamination associated with those activities, please contact the closest RRC district office.
3. The applicant should recognize that environmental site assessments cannot eliminate all uncertainty, are not always exhaustive in their level of inquiry, or warrant being exhaustive in their level of inquiry. Therefore, the RRC cannot be held liable for any damage arising from contamination not discovered during the RRC TBA or from any damages, monetary or otherwise, from contamination discovered during the RRC TBA.
4. The TBA process cannot address all safety hazards associated with a site.

Pearland Assault Baseball Club

- Neighborhood baseball field
 - Ten-year project: Assessments and remediation
 - Cleanup completed in November 2024
 - ~\$187,000 project (BRP/SMCU funds)
- Community Benefit
 - Recreational access for underserved youth in the Pearland, Manvel, and Alvin areas.



Brownfield Success Stories (2 of 2)



Andrews Bird Park

TEXAS
PARKS &
WILDLIFE

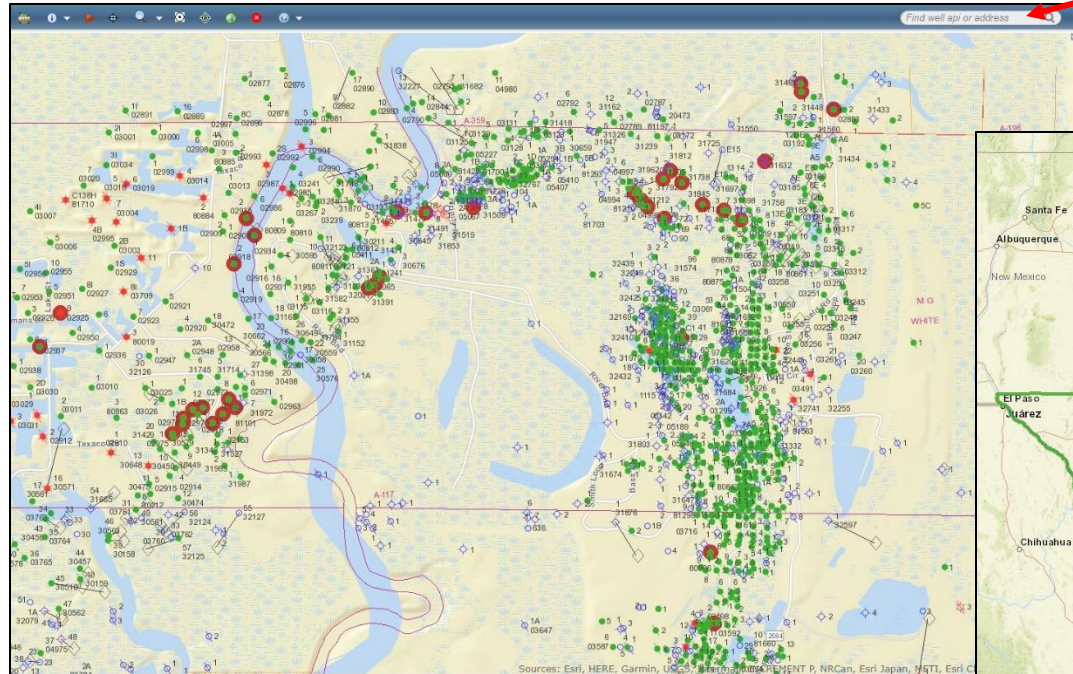


- Wildlife/Bird Viewing Trail
 - Water quality and habitat availability
 - ~\$170,290 project (BRP/SMCU funds)
- Community Benefit
 - Accessible and safe recreational opportunities, increased access to outdoor spaces, increase water quality

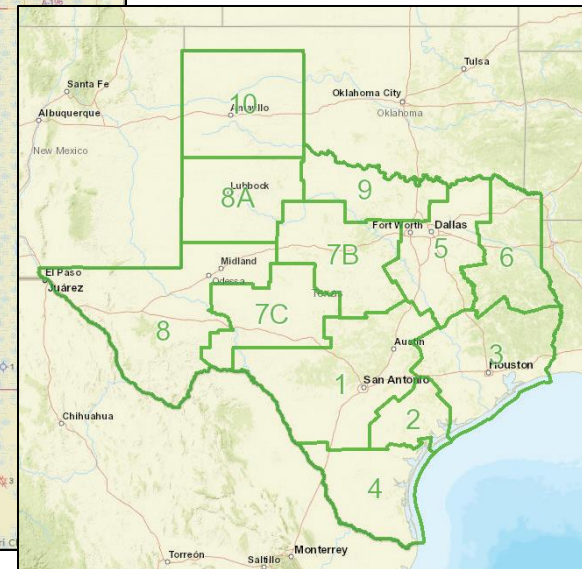
Brownfield Response Program Resources (1 of 1)



1. Visit the [RRC Public GIS Viewer](#)



Look up your property by address



2. Take a tour of the property

3. Work with RRC BRP Staff to determine site eligibility

Important Contact Information (1 of 1)



RRC BRP Team - Contact Information

Brownfield Response Program Coordinator



Dr. Andrea (Andy) Piñon

Email: andrea.pinon@rrc.texas.gov

Phone: Office (512) 463 – 6755

Work Cell (512) 595 - 2750

Brownfield Response Program Outreach Specialist



Magdalena (Maggie) Taylor

Email: Magdalena.Taylor@rrc.texas.gov

Phone: (512) 745-6986

*** Spanish speaker**

Thank You!

Questions?

