



TAB
Technical Assistance
to Brownfields

KANSAS STATE
UNIVERSITY

U.S. EPA Brownfields Grant Writing Strategies Session 1

THANK YOU for joining us today. We will get started in a moment.

Agenda

Tuesday 26 August 2025

10am – 2:30pm CT

Welcome, Introductions & TAB Overview

– Maggie Belanger, Senior Director, CHSR & TAB Program

Overview of the EPA Multipurpose, Community Wide Assessment, Coalition Assessment. and Cleanup Grants and their Differences

- Amy Yersavich, TAB Partner, KSU TAB

Panel Presentation – Grant Walk-Through and What to Do/What to Avoid when Preparing a Grant Application-Part 1: Sections 1 and 2 of the Grant Narrative **Presenters:**

- Kate Lucas, KSU TAB Assistant Director for Region 8, and Roxanne Anderson, KSU TAB

Other Panel Members: *Carrie Rackey, Stantec; Trey Hess, PPM*

Break

Group Exercise: Part 1 Overview

- Amy Yersavich, KSU TAB Partner, Roxanne Anderson, KSU TAB Regional Director

Group Exercise: Part 1—Breakout Groups

Report Out from Group Exercise

Discuss Group Exercise and Materials for Day 2, Evaluation, Final Q&A

Adjourn



Technical Notes

If you experience technical difficulties with your connection:



Dial 785.532.0783



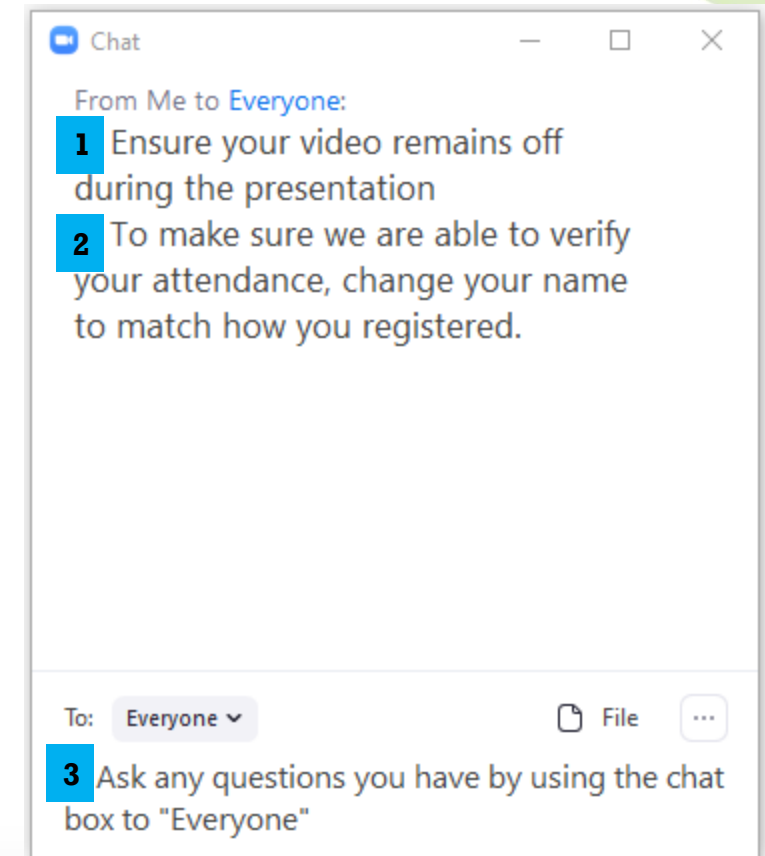
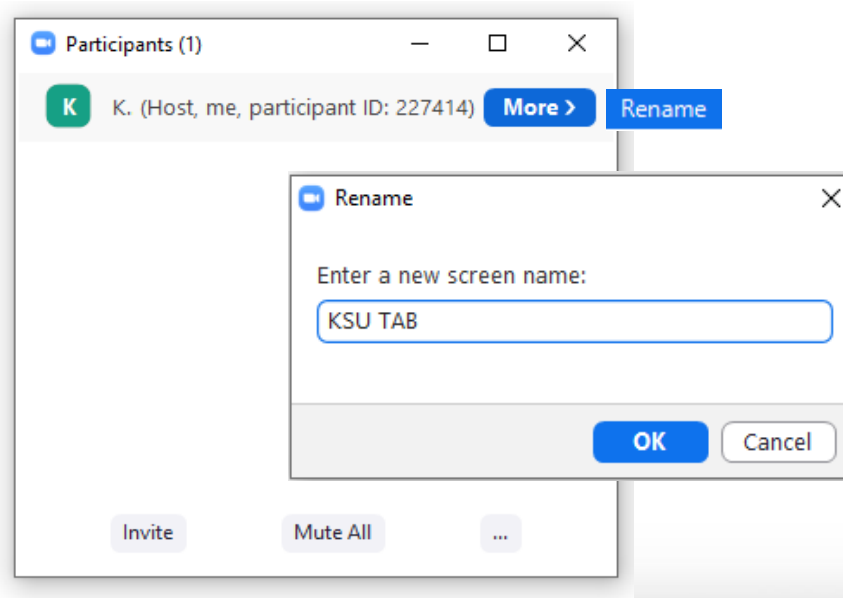
Email chsr@ksu.edu

Additionally, please note:



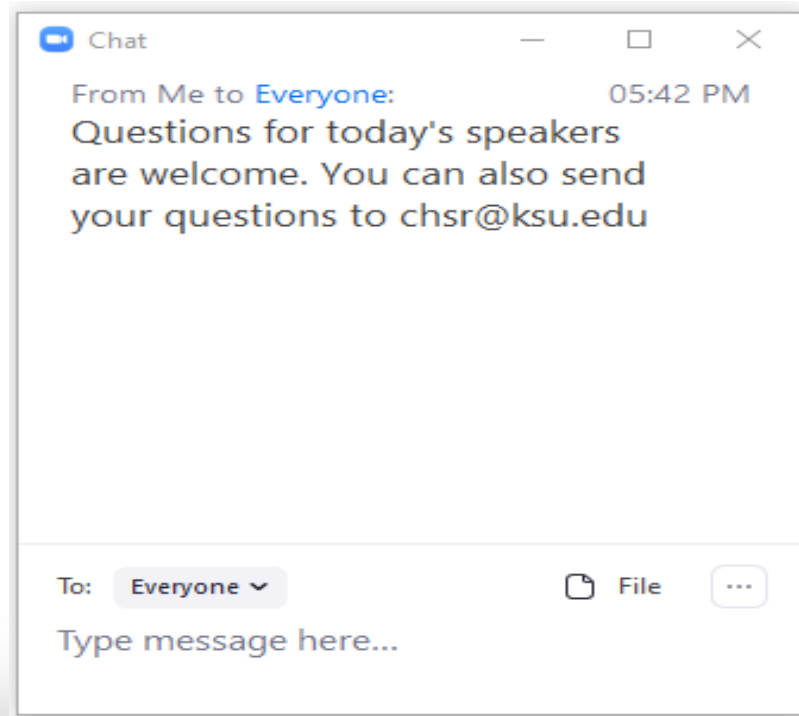
The presentation is being recorded and will be available on the website. The link has also been placed in the chat box.

Using Zoom – The Basics



Questions & Feedback

Submit questions using the chat box.



Providing feedback on today's event.



The link that will be included with the follow up email



This link:

https://kstate.qualtrics.com/jfe/form/SV_38hhg8FxA0bPW4e



Clicking the link provided in the chat box



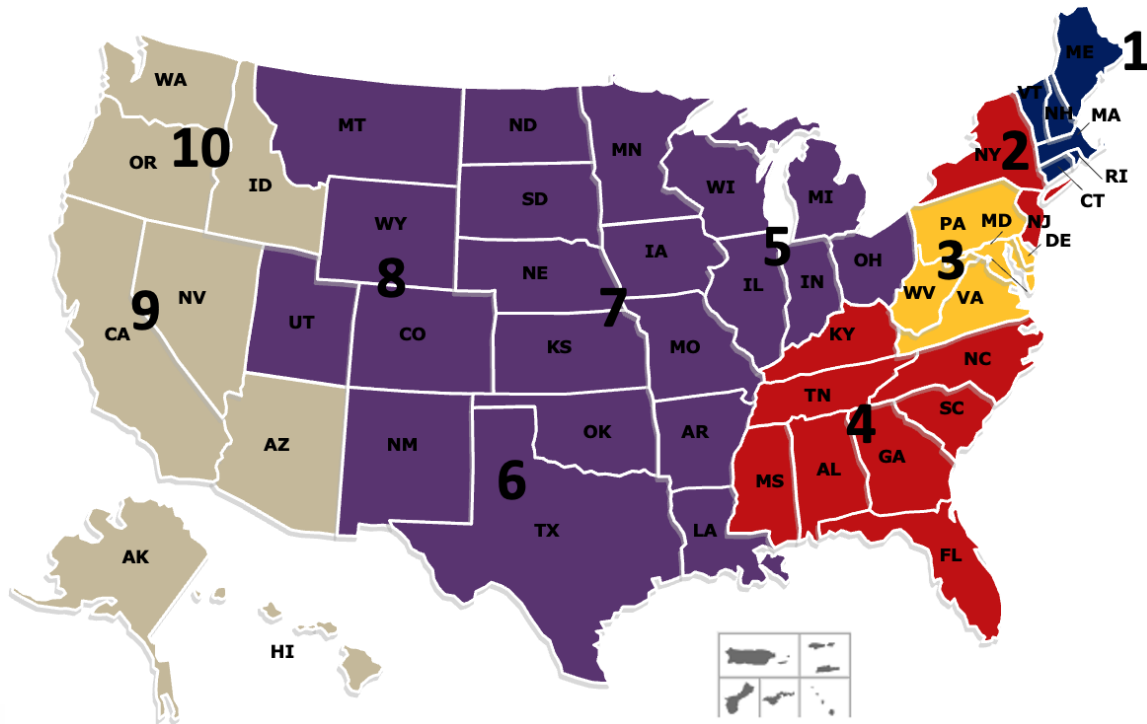
Scanning this QR image from your smartphone

Technical Assistance to Brownfields (TAB)

- Nationally funding program by U.S. EPA
- Technical assistance for communities and tribes revitalizing communities through brownfields redevelopment
- Services provided are free and tailored to meet specific needs



Technical Assistance to Brownfields (TAB)



TAB Service Providers

University of Connecticut EPA Region 1

New Jersey Institute of Technology (NJIT)

EPA Regions 2 & 4

Mid-Atlantic TAB EPA Region 3

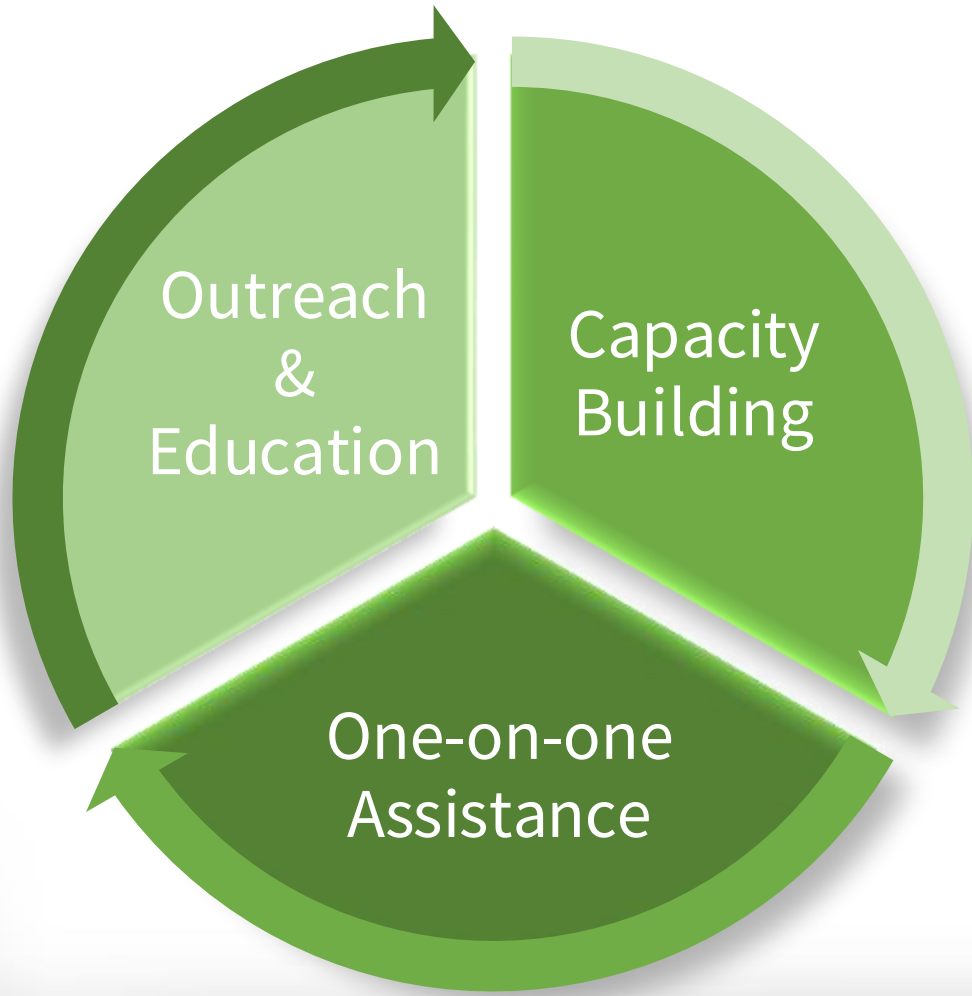
Kansas State University – EPA Regions 5, 6, 7 & 8

Center for Creative Land Recycling (CCLR)

EPA Regions 9 & 10

KSU – ITEP – ANTHC – Tribal TAB

KSU TAB Resources & Assistance



All services are FREE

**Services are provided by:
KSU TAB Staff & as needed,
KSU TAB Partners**

Three main categories of services

Empower communities to realize tangible change through engagement, education, tools and resources.

You've Got a Friend in TAB

TAB providers can fill gaps and help support overall project goals.

- Help inventory additional sites brownfields
- Strategic planning and reuse visioning
- Economic feasibility and highest/best use market analysis
- Community outreach and input
- Educate property owners and facilitate dialogue
- Help identify funding sources
- Review of plans and technical reports
- Be a member of your overall brownfields team



Need Grant Strategy Help or Other Assistance?

Contact your regional KSU TAB staff for one-on-one assistance

EPA Region 5

Roxanne Anderson, Director in EPA Region 5 | roxanderson@ksu.edu | 614.623.3270

Beth Grigsby, Assistant Director in EPA Region 5 | beth27@ksu.edu | 317.601.3839

Kristin Prososki, Assistant Director in EPA Region 5 & 7 | kp3@ksu.edu | 507.340.5799

EPA Region 6

Scott Nightingale, Director in EPA Region 6 | scottnight@ksu.edu | 785.207.6021

Leslie Etzel, Assistant Director in EPA Region 6 | leslieetzel@ksu.edu | 864.404.5421

EPA Region 7 & 8

Maggie Belanger, Director in EPA Region 7 & 8 | maggiejessie@ksu.edu | 785.230.6825

Jacob Rohter, Assistant Director in EPA Region 7 | jrohter@ksu.edu | 573.458.9322

Kristin Prososki, Assistant Director in EPA Region 5 & 7 | kp3@ksu.edu | 507.340.5799

Kate Lucas, Assistant Director in EPA Region 8 | katelucas@ksu.edu | 817.565.2885



Request a review of your FY 26 Grant!

Want a deep and thorough review of your proposal? KSU TAB can help!

To request a review contact Scott Nightingale (scottnight@ksu.edu)

- Post NOFO up until ~3 weeks prior to submission deadline
 - Reviews are generally completed within 3 business days.
- 3 weeks out from submission deadline
 - Review are generally completed within 4-5 business days
- Requests for review will be accepted up to 7 days prior to grant submittal deadline





KANSAS STATE
UNIVERSITY

Overview of the EPA Multipurpose, Community Wide Assessment, Coalition Assessment and Cleanup Grants

Amy Yersavich, TAB Partner, KSU TAB
August 2025

Legal Definition of Brownfields

- “...real property, the expansion, redevelopment, or reuse of which may be complicated by the presence or potential presence of a hazardous substance, pollutant, or contaminant.”
- (Public Law 107-118 (H.R. 2869) - “Small Business Liability Relief and Brownfields Revitalization Act”, signed into law January 11, 2002).



Why Redevelop Brownfields?

- Funding available at the federal level for assessment, cleanup, remedial planning and other related activities.
- NOTE: Funding often available at the state and local level.
- Existing infrastructure available for new development
- Reduces the amount of impervious surface expansion by up to 80%.
- Increase local tax base and facilitate job growth

Preserve	Mitigate	Promote
Preserve community character and history.	Mitigate blight, public health, and safety concerns	Promote infill and vacant property reclamation reducing the need to develop greenfields



Site Eligibility

I have a site in mind, would it be eligible for EPA brownfield funds?

- Does it meet the brownfield definition?
- Is it subject to any environmental enforcement actions?
- Do you own, or have you owned, the property?
- How did you acquire the property?
- Have you caused or contributed to any contamination on site?

Aren't sure? Check with your EPA Regional Contact!

What environmental issues could I address with an EPA Brownfield Grant?

- Hazardous substances
- Petroleum
- Asbestos and Lead-based Paint
- Mine-scarred land
- Controlled substances

FY26 Brownfield Grants



ASSESSMENT GRANTS

- There are State/Tribal, Community-Wide and Coalition Assessment Grants
- Preliminary environmental investigations, brownfield inventory
- Sampling and analysis of environmental media
- Cleanup or redevelopment planning activities



CLEANUP GRANTS

- For sites with well-defined environmental contamination (you must have a complete Phase II)
- Remedial activities (including confirmatory sampling)
- Implement engineering & institutional controls



MULTIPURPOSE GRANTS

- Designed to support a wider range of brownfield revitalization activities
- Includes assessment, cleanup, and planning,
- Typically focused on a target area (as a whole) or a specific group of sites within it.

Assessment Grants

Conduct environmental investigations at brownfield sites to support redevelopment

- Phase I and Phase II Environmental Site Assessments
- Can fund HAZMAT surveys or other environmental sampling

Conduct cleanup and reuse planning to align brownfield development goals with your community vision

- Determine if site cleanup is necessary and prepare cleanup plans
- Site Reuse Assessments
- Market Studies
- Revitalization Plans

Create an inventory of priority brownfield sites in your community and engage the public by hosting meetings and preparing outreach materials



Types Of Assessment Grants: States and Tribal, Community-Wide and Coalition Assessment Grants

Community-Wide Assessment Grants - A Community-wide Assessment Grant is appropriate for communities that are beginning to address their brownfield challenges, as well as for communities that have ongoing efforts to bring sites into productive reuse.

Rather than concentrating on just one specific site to assess, which may or may not be the best investment of brownfield grant dollars, applicants for community-wide assessment grants can assess one or more sites in their target area(s).

- Applicants can request up to \$500,000 (FY26)
- EPA anticipates awarding approximately 70 of these grants.
- The period of performance is 4 years



Coalition Assessment Grants

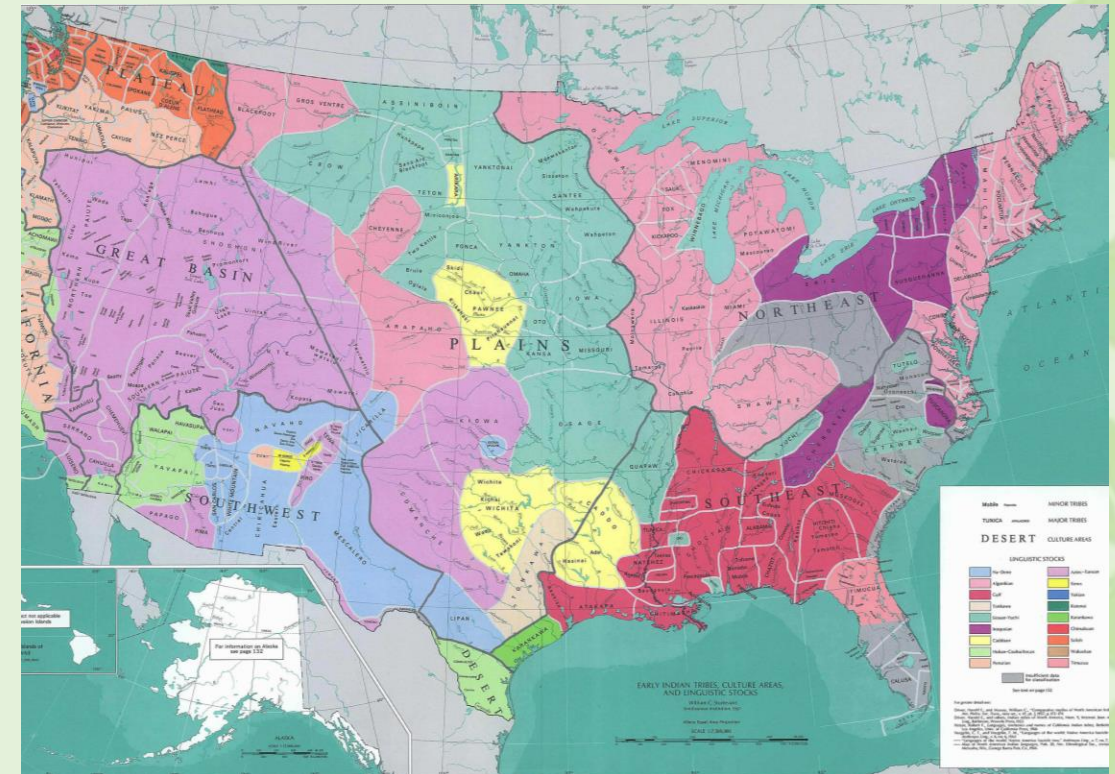
Coalition Assessment Grants are designed for one “lead” eligible entity to partner with two to four eligible entities that do not have the capacity to apply for and manage their own EPA cooperative agreement and otherwise would not have access to Brownfields Grant resources. The lead applicant is encouraged to include eligible community-based nonprofit organizations and small communities (village or township) as non-lead members. This allows these non-lead entities to gain experience writing and managing a brownfield grant.

- The lead entity of the coalition must be a state, county, regional council, group of general purpose units of local government or Native American tribe (other than in Alaska).
- Applicants can request up to \$1,500,000 (FY26)
- EPA anticipates awarding approximately 39 of these grants.
- The period of performance is 4 years



Community-Wide Assessment Grants for States and Tribes

- Only available to states, Federally recognized Tribal Nations and eligible native corporations in Alaska to address brownfield sites in their jurisdiction.
- Applicants may request up to \$2,000,000 to assess sites contaminated by hazardous substances, pollutants, contaminants or petroleum. (FY26)
- EPA anticipates awarding approximately 18 of these grants.
- The period of performance is 5 years.





Cleanup Grants

Fund the activities needed to remediate a site (or sites) you own and prepare it for reuse, including:

- Preparation of detailed cleanup plans
- Remedial activities – soil excavation, tank removal, asbestos removal, etc.
- Construction of engineering controls and monitoring equipment
- Development and filing of institutional controls
- Applicants may request up to \$500,000 or up to \$4,000,000 to address one or more brownfield sites (FY26)
- EPA anticipates awarding approximately 10 \$500,000 grants and 26 \$4,000,000 grants.

Funds cannot be used for site investigation, i.e. assessment work, however, confirmatory sampling IS allowable

REQUIRED PRIOR TO CLEANUP APPLICATION SUBMITTAL

The site must be owned by the applicant at the time of grant application submission.

The site must be eligible for funding. (Contact your EPA Regional Contact for help)

A complete ASTM E1903-19 Phase II Investigation (or equivalent such as a state VCP's Phase II Assessment) must have been conducted at the site.

The Phase II investigation documents must have been reviewed by your state environmental agency and a letter written indicating that there is a sufficient level of site characterization from the environmental site assessment performed to date for the remediation work to begin on the site.

The community notification requirements must be met, i.e. public notice (published no less than 14 days before grant submittal), draft ABCA (Analysis of Brownfield Cleanup Alternatives), public meeting

Multipurpose Grants

Multipurpose Grants provide funding to carry out a range of eligible assessment, planning and cleanup activities within a proposed target area, such as a neighborhood, a number of neighboring towns, a district, a corridor, a shared planning area or a census tract. A Multipurpose Grant allows for a range of eligible activities, for including:

- Developing an overall plan for revitalization.
- Developing inventories of brownfield sites;
- Prioritizing sites; Conducting community involvement activities;
- Conducting environmental site assessments;
- Developing cleanup plans and reuse plans related to brownfield sites;
- Carry out cleanup activities on brownfield sites owned by the applicant
- Applicants can ask for up to \$1,000,000 (FY26)
- EPA anticipates awarding approximately 20 Multipurpose Grants (FY26)
- The period of performance is 5 years





TAB
Technical Assistance
to Brownfields

KANSAS STATE
UNIVERSITY

PANEL PRESENTATION- GRANT WALK-THROUGH

Sections 1 and 2 of the Grant Narrative

Kate Lucas - KSU TAB, Assistant Regional Director, Region 8

Roxanne Anderson - KSU TAB, Regional Director, Region 5



First Things First....Do You Need an EPA Grant?

- What is the scope of my brownfield problem?
- Do I have multiple eligible sites or just one?
- What is/are my target area(s)?
- What work is needed? Planning? Assessment? Cleanup? Other?



First Things First....Do You Need an EPA Grant?

- Does the timing of the grant work for the needs of the community?
- Does your organization have the capacity to manage an EPA grant:
 - Technical/Communications capacity
 - Financial Management capabilities
 - Contractor Management systems
- If capacity is an issue, do you have a logical partner (regional entity, economic development organization, etc.) that can assist with gaps in capacity?
- Reach out to your state brownfields agency if you aren't ready for an EPA grant.



Other Things to Consider...

- Does your Community have a land use plan with **recent data, planning analysis, and community goals** driven by your residents and stakeholders? Think District plans, Corridor plans, Parks and Rec plans, etc.
- With respect to brownfields impacts in your community, do you have a **target area** defined (geographic area, census tract or block, corridor)?
- Do you work with **community-based partners** (neighborhood organizations, churches, nonprofits) in the brownfields impacted area?
- Do **lack of funds affect quality of life, economic development, real estate development, housing**, etc. in your community? Or is there a history of disinvestment in the community?
- Where would you get the funds otherwise?
- Have you worked with the staff at your **State's Brownfields Programs/Tribal Environmental Program** and/or participated in their programs?



Why Apply Now?

- **FY 26 is the last year of IIJA Funding**
- FY27 EPA will only receive their annual “regular” appropriations
 - About \$90 M vs < \$270M/year for Assessment, Cleanup, Revolving Loan Fund (RLF), Multipurpose, and Job Training Grants
 - Community-Wide Assessment grants will be limited to \$300K/grant
 - Cleanups will be limited to \$500K/site
 - Cost share will return for Cleanup, Multipurpose, and Revolving Loan Grants

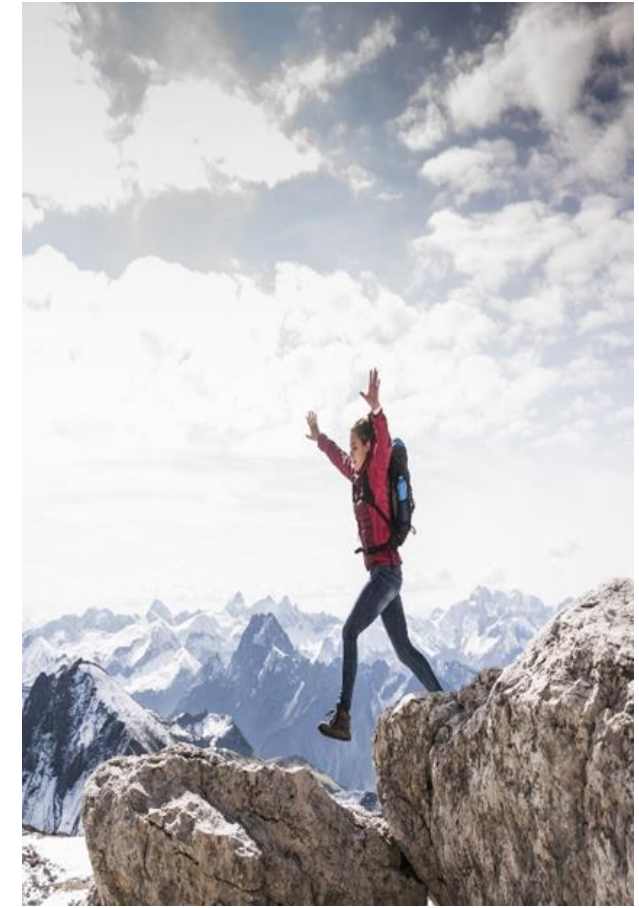


READY? LET'S GO FOR IT!!

EPA FY26 Guidelines will be released in September

- When current guidelines aren't available...review last year's grant guidelines and FAQs
- <https://www.epa.gov/brownfields/marc-grant-application-resources>
- Example of past successful grant applications are available on KSU TAB's resources webpage.
- You can narrow down by year
- Check out the successful grant application for ideas and strategies.
 - <https://ksutab.org/resources?cat=sample>

Go to www.ksutab.org – select TABEZ: your one-stop shop for your **EPA Brownfields Assessment, Multipurpose, and Cleanup application guidance!**



Grants.gov



- Check in with grants.gov early to make sure you're able to submit your grant AND your password is current...
- **Or** identify the person in your organization who understands the process and all the buzzwords such as...UEI identifier (replacing DUNS #), SAM (system for award management), AOR (authorized organization representative), and e-biz POC (e-business point of contact)
- Or...contact other local communities/regional organizations that have applied in the past for mentoring on navigating grants.gov, SAM, and AOR selection
- ***<https://www.grants.gov/web/grants/applicants/applicant-faqs.html#UEI>***

Grants.gov

Confirm UEI # and Registration With SAM (System For Award Management)

- If you have already registered with SAM, you have been assigned the UEI #, but ***make sure your account is active***
- Complete an AOR (Authorized Organization Representative) profile and track status on www.grants.gov

The Approved AOR must be the person who submits the application package – the AOR organization is the applicant!

Before Pen Hits Paper: Start with a great project rather than a great grant

- If you have questions, contact your regional EPA office regarding your eligibility to apply, site eligibility for funding, and legal questions regarding property ownership
 - Grant Strategy and Identification of Target Areas – EPA cannot assist once guidelines are out but you can contact TAB anytime
 - EPA can answer questions about eligibility at any time
- Review EPA FY2025 Guidance for Assessment and Cleanup grants, or FY2024 Guidance for Multipurpose grants
- TAB EZ: Check out the TAB EZ grant writing tool at ksutab.org and explore how it outlines criteria specific to your grant

EPA PROJECTED FY26 BROWNFIELDS GRANTS: NATIONAL COMPETITION

Grant Type	Project Period	Max \$ per Grant	Est. # Awards	Total Per Grant Type
Community-Wide Assessment	4 yrs	\$ 500,000	70	\$35,000,000
Assessment Coalitions	4 yrs	\$ 1,500,000	39	\$58,700,000
Community-Wide Assessment Grants for States and Tribes	5 yrs	\$ 2,000,000	18	\$35,000,000
Multipurpose	5 yrs	\$ 1,000,000	20	\$20,000,000
Cleanup	4 yrs	\$ 500,000	10	\$5,000,000
Cleanup	4 yrs	\$ 4,000,000	26	\$102,000,000

EACH GRANT HAS INDIVIDUAL EPA RANKING CRITERIA

Ranking Criteria for EPA Brownfields Grants (FY 25-new guidelines issued in September 2025)	Community- Wide Assessment /CWAGST	Assessment Coalition	Cleanup	Multipurpose (FY 2024)
Project Area Description/Plans for Revitalization	40 pts	45 pts	55 pts	45 pts
Community Need and Community Engagement	40 pts	40 pts	40 pts	45 pts
Task Description, Cost Estimates, Measuring Success	45 pts	45 pts	55 pts	45 pts
Programmatic Capability and Past Performance	35 pts	35 pts	30 pts	35 pts
Total	160 pts	165 pts	180 pts	170 pts

Section Overview

- ☐ Project Area Description & Plans for Revitalization
- ☐ Community Need & Community Engagement
- ☐ Task Descriptions, Cost Estimates, & Measuring Progress (tomorrow's presentation)
- ☐ Programmatic Capability & Past Performance (tomorrow's presentation)

****Each Criterion is made up of sub-criteria****

Answer everything! If something doesn't apply, say so!
Unanswered criterion could equal Zero Points





TAB
Technical Assistance
to Brownfields

KANSAS STATE
UNIVERSITY

PROJECT AREA DESCRIPTION AND PLANS FOR REVITALIZATION

Section 1: Project Area Description and Plans for Revitalization

1. Project Area Description and Plans for Revitalization
 - a. Target Area and Brownfields
 - i. Overview of Brownfield Challenges and Description of Target Area
 - ii. Description of the Priority Brownfield Site(s)
 - iii. Identifying Additional Sites
 - b. Revitalization of the Target Area
 - i. Reuse Strategy and Alignment with Revitalization Plans
 - ii. Outcomes and Benefits of Reuse Strategy
 - c. Strategy for Leveraging Resources
 - i. Resources Needed for Site Reuse
 - ii. Use of Existing Infrastructure



Target Area and Brownfields

The background section should set the stage for a cohesive story where the affected population directly benefits from the cleanup or assessment activities.

- Make a BRIEF but passionate case
- Identify a specific issue based on past history
- Identify priority sites in your target area with past and current land uses and environmental conditions. Be specific yet concise.
 - Why are the sites a priority?
 - How do they impact the affected populations?
- Note how you will go about identifying additional sites if needed

Consider your target area location: is it near environmentally or socially sensitive receptors?

Often times the project description is not where people lose significant points, but not defining the exact issue being addressed carries through the entire proposal. A poorly defined proposal will not get funded.



Thread the Story Throughout

Project Description: Taliville Example

- You are the grant-writer for Taliville, a small city of 30,000 people
- In the early 1980s, a major industrial employer shut down, and over 1,000 employees lost their jobs. This sent the local economy into a spiral, and it hasn't fully recovered
- The city is trying to attract new businesses, **but 40+ years of economic instability have led to a shortage of suitable housing for new residents, which is preventing economic growth**
- Additionally, your residents struggle with high rates of asthma, high blood pressure, and heart conditions due to disinvestment
- There is a historic hotel in downtown that has been vacant since the city's heyday in the 1980s. It is an attractive nuisance, and you suspect it contains a significant amount of asbestos, lead paint, and other hazardous building materials



Thread the Story Throughout

Project Description: Taliville Example

Lack of business opportunities, job loss, shattered economy



There is insufficient quality housing to attract new businesses and health of residents is impacted



Housing site chosen as a priority for abatement



Providing housing will reduce health impacts and improve economic conditions moving forward.



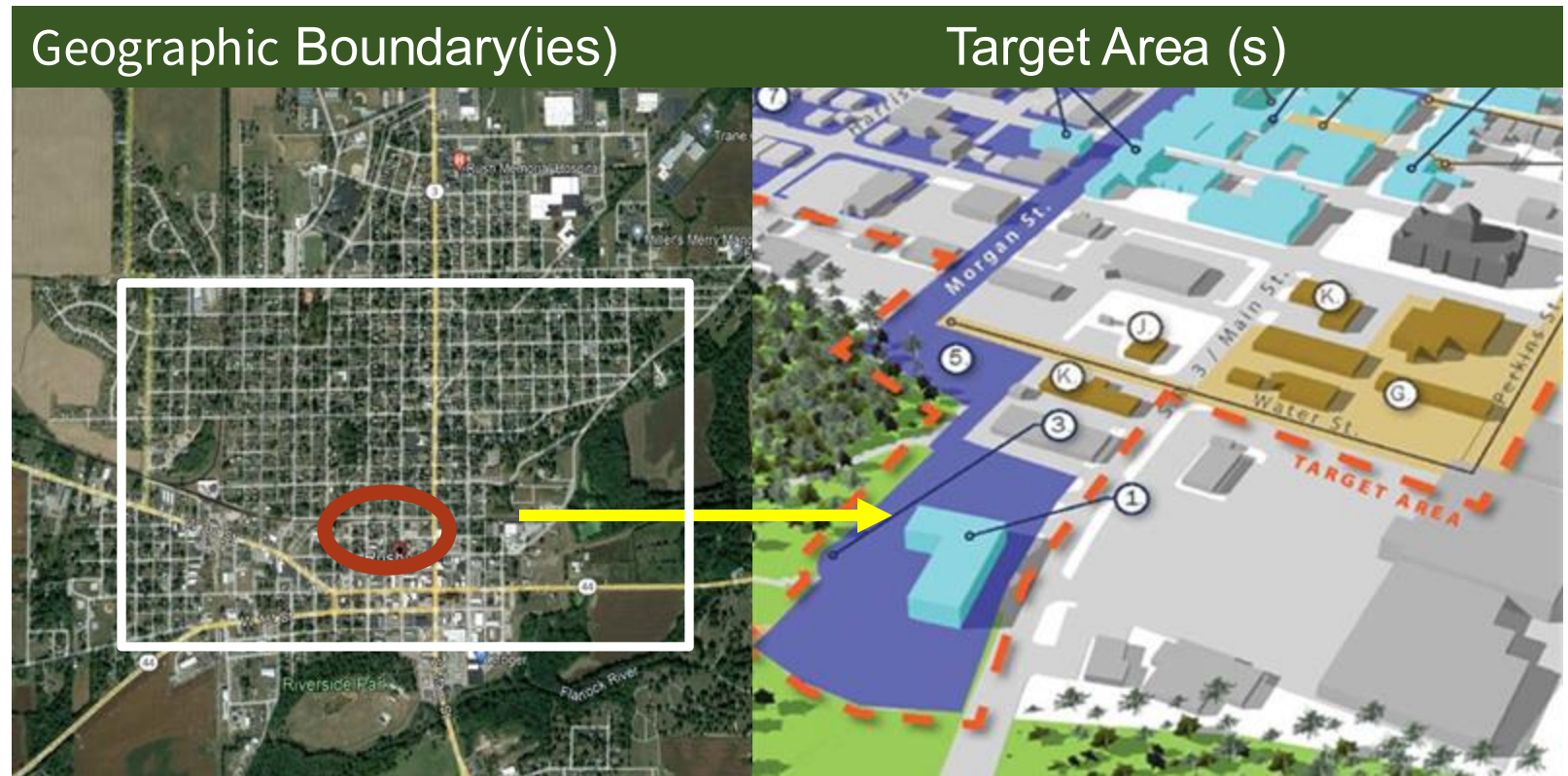
Geographic Boundary(ies) and Target Area(s)

Geographic Boundary(ies)

- Boundary(ies) in which work can be performed (formerly referred to as “jurisdiction”)
- Include discussion of brownfields **challenges/impacts w/in boundary**
(not industrial/cultural history)
- **How will this grant address these challenges?**

Target Area(s)

- Within the geographic boundary(ies), specific target area(s) where you plan to focus grant activities, such as a neighborhood, district, corridor, or census tract.

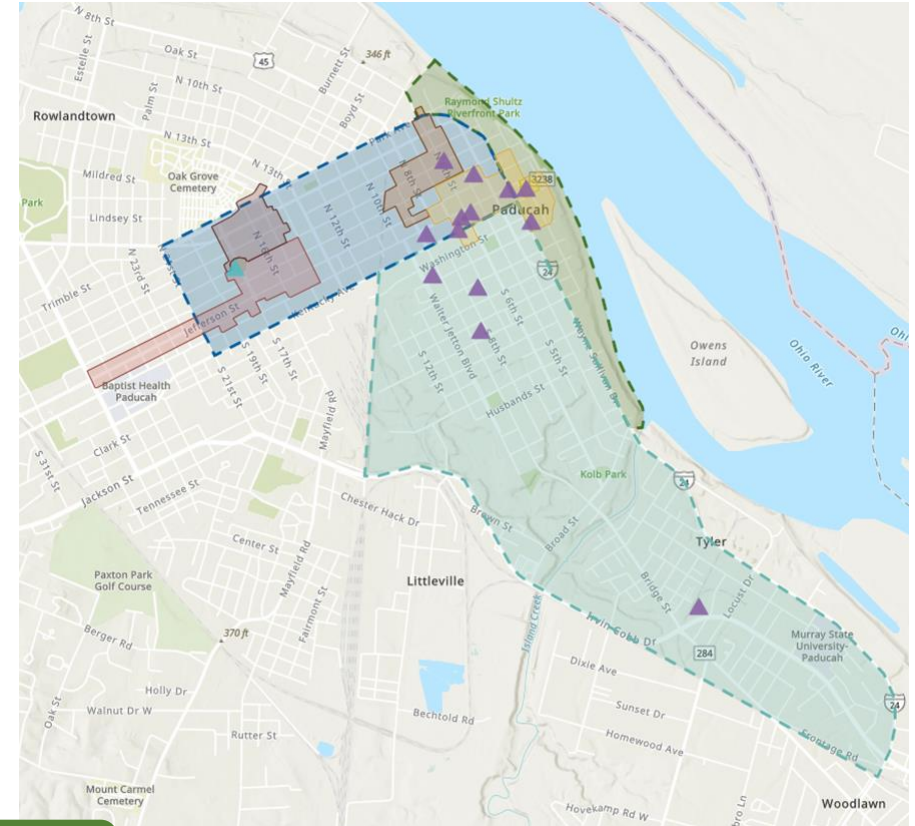


KSU TAB 2023 GW Training Series: Webinar #3

<https://www.ksutab.org/?ResponseView=TABResourceDownloadView&id=4935>

Description of Priority Brownfield Site(s)

- Highlight one or more priority sites (include past & current uses, site conditions, # and size of structures, environmental issues, etc.) and explain **why the site is a priority for assessment and reuse. Be as specific as possible.**
- **Note the potential impacts of contamination:** tie impacts to health issues found in area; consider groundwater/vapor intrusion impacts and stormwater run-off.
- **Coalition:** At least one priority site in lead and non-lead's TAs
- **Cleanup:** Describe known contamination (use Phase II)
 - Make sure to discuss structures – will they be removed or reused? Exposure: How do existing contaminants impact surrounding residents, sensitive populations, waterways



What to Include:

Why is your site a priority? Ex: it represents a significant health hazard or attracts vagrants/crime; it has great redevelopment potential; redevelopment meets objectives community plans. **Where are site(s) located?** proximal to neighborhoods, sensitive populations, near sensitive eco-systems, bodies of water, in a flood plain; **Other Factors:** Is your priority site(s) is adjacent to body of water, located on floodplain, impacted by mine-scarred lands or a coal-fired power plant recently closed or is closing?

Description of Priority Brownfield Site(s)

- Highlight one or more priority sites (e.g., uses, site conditions, # and type of issues, etc.) and explain why they are **assessment and**
- **Note the potential for health issues** (e.g., air quality, intrusion impacts)
- **Coalition:** Are there any groups or organizations involved?
- **Cleanup:** Describe the status of the site.
 - Make sure the site is not reused? Explain the surrounding area.

Tip: Don't list every single site you want to investigate! It's better to focus on 3-7 sites that you have information for and are high-priority. If you have a brownfield inventory already, you can mention that in "Identifying Additional Sites"



Why is your site a priority? Ex: it represents a high-priority site; it has great redevelopment potential; redevelopment meets objectives community. proximal to neighborhoods, sensitive populations, near sensitive eco-systems, bodies of water, in a flood plain, **Other Factors:** Is your priority site(s) adjacent to body of water, located on floodplain, impacted by mine-scarred lands or a coal-fired power plant recently closed or is closing?

Identifying Additional Sites

- Discuss your plans to involve local government, community groups, business owners, and other stakeholders
 - You can mention the format and frequency of these meetings
- A brownfield inventory can be a great first activity for your assessment grant!
 - You can also work with KSU TAB or your state brownfields office to develop a brownfield inventory before you submit your application or before you receive grant funding



b. Revitalization of the Target Area

- Reuse Strategy and Alignment with Revitalization Plans
 - **The more concrete your reuse plans are, the better!**
 - Know your plans and understand community vision
 - Local & Regional Plans
 - Explain how the community was involved in creating these plans
 - *How will addressing your priority sites fit in with the plans?*
- Outcomes and Benefits of Reuse Strategy
 - Identify direct impacts of affected populations
 - QUANTIFY benefits as much as possible
 - **Tie back to the challenges mentioned in the target area.**
 - *How will addressing your priority sites directly or indirectly benefit the community?*



Strategy for Leveraging Resources

- Resources Needed for Site Reuse
 - Describe access to funds from other sources to further assess, cleanup, and reuse of sites
 - Think grants, loans, money from budget, congressional allocations, TIF, etc.
 - How does this grant set up for leveraging other resources?
 - The more secured funding is, the better!
- Use of Existing Infrastructure
 - Will your grant use existing infrastructure or is there a need?
 - Mention funding resources to address any necessary infrastructure needs.



Strategy for Leveraging Resources: Use of Existing Infrastructure

- List existing infrastructure (i.e., water, sewer, gas, electric, transportation, high speed internet) and how it fits into your redevelopment plan
- What are the leveraged benefits of using existing infrastructure?
- If applicable, describe the environmental benefits of infrastructure upgrades, like replacement of lead pipes or updated septic or sewer systems.
- List what infrastructure needs or upgrades will be required to meet project goals and how funding will be sought to cover it
- **Cleanup:** if additional infrastructure are key to revitalization plans, provide clear description of needs/upgrades and extent to which funding resources will be sought that are relevant to the project



Thread the Story Throughout

Reuse Strategy and Leveraging: Taliville Example

- The City of Taliville is interested in acquiring the hotel site to convert it to attainable workforce housing, but they need assessment funding before they can acquire it
- Addressing lack of housing is **priority** for the City of Taliville **as documented in their recent Comprehensive Plan**.
- Improved housing stock for work force **aligns with Regional priorities** and **supports economic development opportunities** by offering housing for new employees.
- The City of Taliville has secured funding from HUD and anticipates partnering with a private developer to renovate the building (**Leveraging**)
- The building is served by existing infrastructure and will not need upgrades to accommodate the reuse.



KANSAS STATE
UNIVERSITY

Thank You!

Kate Lucas, KSU TAB Assistant Regional Director for Region 8, katelucas@ksu.edu

ksutab.org



TAB
Technical Assistance
to Brownfields

KANSAS STATE
UNIVERSITY

Community Need and Community Engagement



COMMUNITY NEED

- **Community's Need for Funding—Why do you need the \$\$\$**

- Reduced Tax revenues
- Small population and/or low income of the community
- Impoverished tax base
- Are your limited resources prioritized elsewhere? Describe and Quantify

e.g. The Township's limited budget has been allocated this year to the usual township functions plus to expand their wastewater treatment plant, leaving no extra funds for brownfield assessment.

IMPORTANT: If the inability to draw on other initial sources of funding is not because the community has a small population or is low-income, then the response may only earn up to 2 points (5 points max)

Example Language (Cleanup Grant)

The City's annual budget is primarily financed through property taxes. The City's population is just 7,600 and the median value of the owner-occupied housing in the City is \$102,600 compared to the state value of \$324,700. Our Target Area is in the 90-95th percentile for housing burden where residents both earn less than 80% of the Area Median Income and are spending more than 30% of their income on housing costs. The City's financial situation is further complicated by the lasting impacts of Covid19. In addition, in April 2023, the City's networks experienced a targeted cyber-attack, forcing a complete isolation of the City's technology systems, which cost the City an estimated \$2 million; recovery is still ongoing. EPA Cleanup Grant funding is critical to ensuring that the highest and best use for our priority site can be achieved.

Community Need – Threats to Sensitive populations

In determining threats to sensitive populations in your community, U.S. EPA strongly encourages applicants to use and include data to characterize their target area(s) and the community as a whole.

In addition, applicants are encouraged to use tools that are reputable and widely recognized to identify where priority sites are located within specific census tracts

Mapping Tools:

epa.gov/enviroatlas

epa.gov/tri

cdc.gov/places



EPA United States Environmental Protection Agency

Environmental Topics ▾ Laws & Regulations ▾ Report a Violation ▾ About EPA ▾

EnviroAtlas

New to EnviroAtlas?

EnviroAtlas is an interactive web-based tool that decision-makers can use to inform policy and planning in the places where people live, learn, work and play.

Subscribe to the EnviroAtlas bulletin [🔗](#) to receive the latest EnviroAtlas news delivered straight to your inbox!

Human health and well-being are closely tied to the environment, which provides benefits such as clean water, clean air, and protection from natural hazards, also known as ecosystem goods and services. EnviroAtlas provides geospatial data, easy-to-use tools, and other resources related to ecosystem services, their chemical and non-chemical stressors, and human health.

About EnviroAtlas

- [About Ecosystem Services](#)
- [Frequently Asked Questions](#)
- [What's New?](#)

Interactive Applications

- [EnviroAtlas Interactive Map](#) | Discover and use hundreds of maps.
- [Eco-Health Relationship Browser](#) | Explore eco-health connections.

How to Use EnviroAtlas

- [Training and Tutorial Videos](#)
- [Example Projects that Use EnviroAtlas](#)
- [Brownfields Applications](#)
- [Health Impact Assessments](#)

Threats to Sensitive Populations



For the three categories of Sensitive Populations (under Section 2.a.ii.) don't forget to describe how the grant will address or facilitate the identification and reduction of threats to Sensitive Populations

Example Language:

This grant will facilitate reduction of environmental contamination that may be associated with the Target Area's chronic disease rates and help lessen its significantly high health burdens.

COMMUNITY NEED: Health or Welfare of Sensitive Populations

Identify sensitive populations in the target area and the health/welfare of sensitive populations. How will this grant address those issues?

Example Language:

Abandoned and/or unaddressed Brownfields sites in the Target Areas promote environmental degradation and contribute to negative public health impacts for nearby residents, particularly the sensitive populations in those areas. These populations are acknowledged to experience greater health risks than the general population from exposure to Brownfield-sourced contaminants in their area. Sensitive populations in the Brownfields Target Areas can include include infants, children, the elderly, minorities, pregnant mothers, and individuals with a history of chronic illness.

What About:

- *What percentage children, elderly, minorities and pregnant women in target area? Compared to City, State and US values.*
- *General population? What does this mean? Population for the City? County? US?*
- *How will grant address threats to these populations?*





KANSAS STATE
UNIVERSITY

Yes!

COMMUNITY NEED: Health or Welfare of Sensitive Populations

Example:

The Target Area's sensitive populations include the impoverished, elderly, and minorities. Within the target area, 19% of all families live below the poverty level (US 9%), 34% are Black or African American (US 13%), and 23% are elderly (US 20%). The education level in the target-area CTs is below the state and national rates: over 10% of residents who attended high school lack a diploma, compared to 6% statewide and 6% nationally, and only 10% hold a bachelor's degree or higher, compared to 30% statewide and 34% nationally. Low education levels can equate to higher crime rates. The Township has an extraordinarily high rate of violent crime (962.1 per 100,000 compared to 293.2 for Ohio and 379.4 for the US). This grant will help facilitate redevelopment in the poorest area of our township creating living wage jobs in the light manufacturing business that is planned for one of our priority sites.

COMMUNITY NEED: Sensitive Populations

Provide and compare your sensitive population data/percentages as well as other data and information, e.g. Health & Welfare data, in a table format to make it easier for reviewers to assess the differences between your data and those of the county, state, U.S., etc.

TABLE 1: DEMOGRAPHICS: Census 2019	TA*	Muncie	County	Indiana	US
Population	6,214	68,750	115,020	6.6M	324.7M
%Minority	55.3	16.9	11.6	16.7	27.5
%African American	47.9	11.1	7.0	9.4	12.7
% Individuals below poverty level	40.5	31.0	21.9	13.4	13.4
% < 5 yrs. living below poverty level	76.0	43.1	31.2	17.0	17.4
%Single female below poverty level with own children	59.4	41.6	36.4	28.5	26.5
%African Americans living below poverty level	75.7	40.2	38.3	26.8	22.5
% Unemployment	9.8	7.9	6.6	4.8	5.3
Median Household Income (MHI)	\$23,029	\$33,944	\$43,512	\$56,303	\$62,843
Median Home Value (MHV)	\$50,066	\$73,500	\$93,600	\$141,700	\$217,500

Greater than Normal Incidence of Disease/Adverse Health Conditions

EPA's FY25 Assessment and Cleanup Guidelines asked for the applicant to identify and describe sensitive populations in the target area(s) that suffer from a greater-than-normal incidence of diseases and health conditions including cancer, asthma or birth defects.

This data should be specific to your target area.

Note: make sure you include at least one of conditions EPA mentions in the Guidelines – Cancer, Asthma and/or Birth Defects (per FY25 Guidelines) or you will only earn 2 out of 5 points.



Health Measure	Target Area	State	US
Cancer Mortality (deaths per 100K people)	224.95	150.35	140.21
Asthma	8.8%	7.5%	5.1%
Diabetes	21.2%	13.6%	12.0%
Kidney Disease	5.2%	2.9%	2.3%
High Cholesterol	42.8%	36.1%	33.3%
Limited Physical Activity Time	40.5%	28.3%	25%

COMMUNITY ENGAGEMENT

You have many partners in this grant project:

- Local/state/tribal environmental agency that implements the brownfields program (OHIO EPA)
- Other relevant government agencies like your Health Department
- Workforce Development Partners
- Local/Regional Economic Development Agencies
- Community and Neighborhood Organizations
- Universities, Community Colleges and Training Centers
- Chamber of Commerce, Visitors Bureau
- Brownfield Developers
- County Extension Office
- Church and Neighborhood Groups
- TAB can also be a partner providing outreach, technical, visioning and other assistance



TAB
Technical Assistance
to Brownfields

KANSAS STATE
UNIVERSITY



Note: Responses that do not involve at least one relevant community-based organization or community liaison will be evaluated less favorably.



Project roles

Identify the local organizations and groups (i.e., partners) that you will have involved in the project. These organizations and groups are expected to provide technical assistance and information that will help you in the performance of the project.

Partner Name	Point of contact	Specific role in the project
Neighborhood House	Julie Jones, President/CEO juliej@nhp.org	Local grassroots, 501(c)(3) organization providing a safe environment, resources, and education to empower the community. They will assist with community outreach and cleanup reuse planning and disseminate information to TA residents.

Don't Forget!

- *Involve different types of partners

- *Involve partners that are relevant to your project plans

For Assessment Coalitions: Discuss how each non-lead coalition member will be engaged and informed

STARTING EARLY: OUTLINING YOUR PROJECT

Site Name & Operations/Surrounding Area	Targeted Area #/Census tract/block	Vision and impact on community	Planning document Referenced	Leveraging Resources	CBOs	Notes/Comments
Tokheim: vacant, 10 acre blighted site, 3 blighted buildings, in midst of EJ neighborhood—distressed housing	TA#1/Tract 3	Affordable Housing development opportunity	City Comprehensive Plan	City: purchase, TIF for infrastructure improvements HUD: Tax Credits State: Housing Tax Credit Program and Ohio DOD remediation funding	Pleasant Neighborhood Association HOPE Foundation for Environmental Justice Community Action Program County Health Department	Private ownership, but likely accessible. Could aid in city housing needs if properly approached. Site does have groundwater contamination.
Bob's Gas Station: on Greenway--Tax Delinquent—1/2 acre with building in poor condition	Greenway Corridor (TA# 2/Tract 1)	Coffee Shop, Ice Cream or Retail on Greenway	Greenway Commission Plan	City: funds for demolition SBA: small business loan State UST cleanup program	Johnson Neighborhood Association Tucker Grade School Cardinal Greenway Commission	City has access, Needs demolition, Leaking Underground Storage Tank, Blighted site on well-travelled Greenway
Poor Farm on gateway to City; 5,000 square ft historic building (fair shape), 10 acres	TA#1/Tract 3	Potential Commercial: Brewery	City Comprehensive Plan	Developer will acquire and redevelop if clean – needs incentives State Historic Preservation, Ohio DOD Federal Historic Tax Credits County Economic Development	Chamber of Commerce Historical Society Trailer Park Association Lost Goose Neighborhood Association	Historic structure, strong commercial location—adjacent to trailer park, low-income residents, nearby enough land for brewery and parking Has asbestos and lead paint
Vacant Hoover Precision Products adjacent to EJ neighborhood-13,200 sf building-outbuildings in disrepair-3 acres	TA#1/Tract 3	Industrial—new jobs	City Comprehensive Plan	City property acquisition prior to development, TIF ACE Manufacturing redevelopment State: Ohio Jobs, Workforce Development State Equipment tax credits	Pleasant Neighborhood Association Su Casa Hispanic Center (across street) Northeast Ohio Hispanic Center for Economic Development	Unsafe property-not secured Tsubaki is parent owner. Site has potential contamination—important for expansion of adjacent ACE Manufacturing business

Incorporating Community Input

- Discuss plan for communicating progress to: the local community; the underserved community(ies); residents/groups directly affected by the project work and project partners AND how will you keep them engaged?
- How have you engaged the public in the past? What were your successful approaches and methods? Mention the successes in your grant narrative and how you will use them for this project.
- Describe community-based organizations (partners) and their committed roles in planning and implementing the grant project. Don't forget neighborhood and church groups as they are often your "grass roots"
- Lastly, how will you provide effective and appropriate means to communicate the grant project progress as well as solicit and consider community input.

If socially distant community engagement plans are needed (per the grant guidelines) see EPA's fact sheet on Socially Distant Engagement Ideas [Socially Distant Engagement Ideas | US EPA](#)



Incorporating Community Input

Local community: CTBLB staff will continue to communicate project progress to the community through the CTBLB Board as well as the Regional Brownfield Partnership (RBP), a diverse membership of municipalities, community organizations, and business groups from across the region (24 municipalities). Each time a project is selected, the target community will host a kickoff meeting and progress meetings to solicit input from the public.

What About:

- *Who will consider the community input? CTBLB Staff? CTBLB Board? RBP? All of them?*
- *How will the staff respond to the community input?*





KANSAS STATE
UNIVERSITY

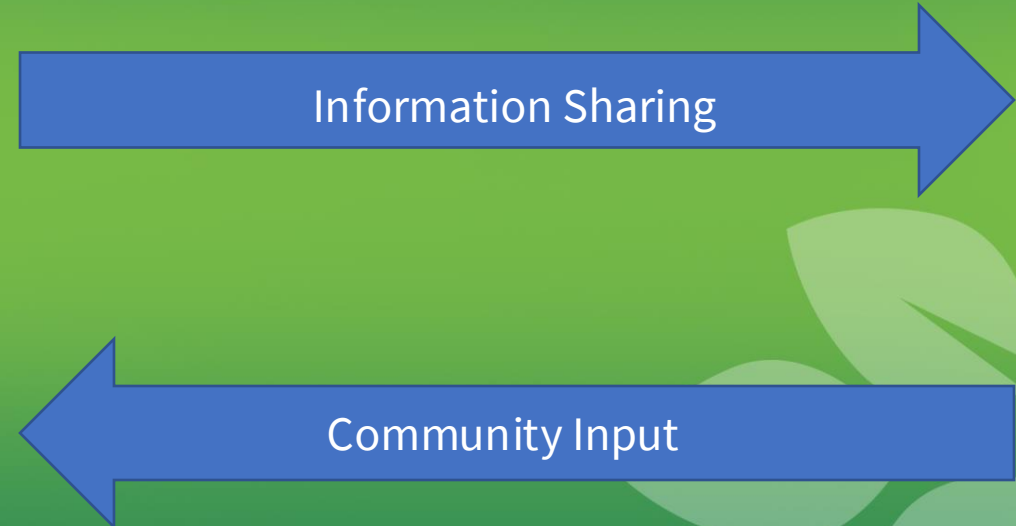
Yes!

Incorporating Community Input

At the beginning of the Project, the city will create a task force comprising the groups listed above and local civic, watershed, business, real estate, educational, fraternal, workforce development, and economic development groups. The group will be invited to meet quarterly. The city will solicit community input during all stages of site selection, prioritization, cleanup and reuse through periodic community meetings. Notice of community meetings will be provided to the public via media alerts a week in advance stating the meeting date and time through a press release to the local newspaper and by posting a notice on the city's websites. Meetings will have virtual attendance options due to COVID-19 to ensure access for all. The city will place advertisements on the local area radio stations. The city will establish a Facebook page for the grant, which will allow the community to interact with the city during the entire project. In addition to a PDF on the city website, hard copies of the draft Work Plan will be available at City Hall and at the City Library for those without internet. The public will also be able to provide comments verbally by phone to City staff, electronically via email or on Facebook, and in writing via letters to the city. All comments received and site decisions will be discussed during community meetings.

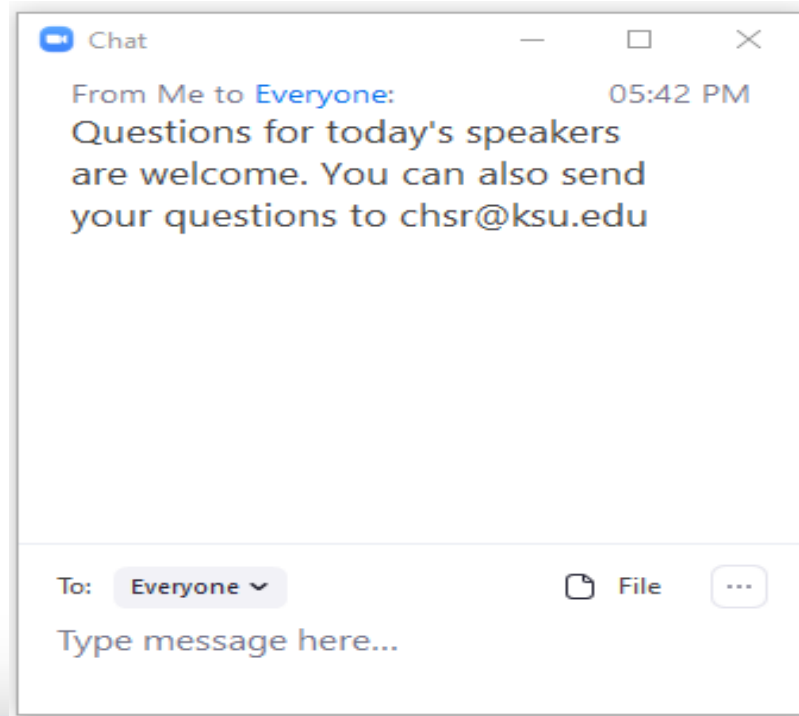
- Engagement with community is a two-way street – to inform and gather input
- Use input received to help inform redevelopment goals
- Synergies and partnerships can be formed
- You get valuable input that will help the project's success, and the public will gain a sense of ownership in project
- Ensure engagement continues **throughout the grant period.**

Incorporating Public Input



Questions & Feedback

Submit questions using the chat box.



Providing feedback on today's event.



The link that will be included with the follow up email



This link:

https://kstate.qualtrics.com/jfe/form/SV_38hhg8FxA0bPW4e



Clicking the link provided in the chat box



Scanning this QR image from your smartphone



TAB
Technical Assistance
to Brownfields

KANSAS STATE
UNIVERSITY

BREAK!

15 Minutes



Grant Writing Workshop Instructions

- Each of you has been assigned to a working group and each group will be put in a separate Zoom “break-out room” along with a facilitator.
- Each working group will review ONE Narrative/Ranking Criteria, either Section 1 or 2 (Section 3 on DAY 2) from a successful Assessment Grant Proposal. You will have a little over one hour to complete the Exercise.
- Assign a lead from your working group who will present during the Report-Out Session. The facilitator will guide you through the exercise and serve as the timekeeper.
- Review the Narrative/Ranking Criteria for Sections 1 or 2, as assigned (Section 3 on DAY 2)- individually first, then discuss and score as a Working Group (Suggestion: use first 10-15 minutes for individual review and the remaining time for working group discussion/scoring and preparation for the Report-Out Session)
- When reviewing, carefully consider how well grantee does tying their story together in their narrative



KANSAS STATE
UNIVERSITY

Grant Writing Workshop: Group Exercise Tools

- **Section V, Narrative Review Information– this handout is your primary tool for reviewing the Narrative/Ranking Criteria.**
- **Section IV of EPA Guidelines– use this when you need to refer to the actual language contained in the EPA Grant Guidelines for the Criteria that must be contained in the Narrative**
- **FY245CWA Application for Manitowoc, WI**

Keep in Mind while reviewing your example Grant Narrative/Ranking Criteria....

- **The Narrative should be clearly and concisely written. Factual responses to all ranking criteria and sub-criteria must be provided. Applicant should leave no criterion blank.**
- **Did applicant provide sufficient detail will allow for an evaluation of the merits of the proposal?**
- **Did they provide data from the Census or other data sources (percentages and percentiles – not generalities!)**
- **Did they provide a response to all information requested under the criterion?**
- **Make sure the applicant used the sample format tables in the Guidelines. If they did not, make sure they included all the information in the sample tables in their tables or summaries.**
- **Consistency throughout the proposal is essential!**

REPORTING OUT & GROUP REPORTS

Group Reports (5 minutes):

1. Using the Group's scores, what criteria(ion) did the community best respond to in their proposal? Why?
2. Did you find some criteria that the community could have responded to better? Why?

Comments by experts with Q & A (2 minutes)

Pts	Criteria
	<p>1.a. Target Area and Brownfields (20 points)</p> <p>1.a.i. Overview of Brownfield Challenges and Description of Target Area (5 points)</p> <p>1.a.ii. Description of the Priority Brownfield Site(s) (10 points)</p> <p>1.a.iii. Identifying Additional Sites (5 points)</p>
	<p>1.b. Revitalization of the Target Area (10 points)</p> <p>1.b.i. Reuse Strategy and Alignment with Revitalization Plans (5 points)</p> <p>1.b.ii. Outcomes and Benefits of Reuse Strategy (5 points)</p>
	<p>1.c. Strategy for Leveraging Resources (10 points)</p> <p>1.c.i. Resources Needed for Site Reuse (5 points)</p> <p>1.c.ii. Use of Existing Infrastructure (5 points)</p>
	<p>TOTAL – PROJECT AREA DESCRIPTION AND PLANS FOR REVIATALIZATION (40 Points Maximum)</p>

Tomorrow's Agenda



Welcome and Introductions

-Maggie Belanger, Senior Director, CHSR & TAB Program

Gathering and Interpreting Data

-Lucy Stanfield, US EPA Region 5

Helpful Hints and Resources

-Beth Grigsby, KSU TAB Assistant Director in Region 5

Panel Presentation – Grant Walk-Through and What to Do/What to Avoid when

Preparing a Grant Application-Part 2: Sections 3 and 4 of the Grant Narrative and Presenters:

- Leslie Etzel, KSU TAB Assistant Director in Region 6, Amy Yersavich, KSU TAB Partner

Other Panel Members: *Torre Ippolito, US EPA Region 5; Belinda Richards, Terracon*
Break

Group Exercise: Part 2 Overview

- Amy Yersavich, KSU TAB Partner, Roxanne Anderson, KSU TAB Regional Director

Group Exercise: Part 2 - Breakout Groups

Report Out from Group Exercise

Writing a Strong Proposal - Tying it All Together

- Amy Yersavich, KSU TAB Partner

Adjourn

We Want to Hear Your Feedback

Please provide feedback on today's event:

1. Click this link
https://kstate.qualtrics.com/jfe/form/SV_38hhg8FxA0bPW4e
2. Click the link provided in the chat box
1. Scan this QR image from your smartphone





TAB
Technical Assistance
to Brownfields

KANSAS STATE
UNIVERSITY

FINAL HOUSEKEEPING



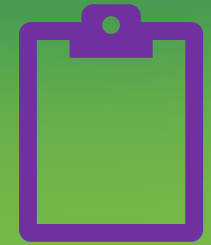
You'll receive a
**certificate of
attendance** via
email



If you joined by **phone**
only email
chsr@ksu.edu with
your full name



The **recording** will be
available within 1 week
on the website



Tell us how we
did in the **survey**

**Thank you for participating in today's event.
We look forward to seeing you again tomorrow!**