



Maps and Data for your Brownfields project

Lucy Stanfield, GIS Specialist
U.S. Environmental Protection Agency
Region 5

August 27, 2025



Common Questions

- What do the Brownfields grant solicitations say?
- What map tools can help applicants describe their community and/or target areas?
- What datasets are available for sensitive populations, floodplains, environmental exposures, proximity to releases, etc.?
- How can users get the data and maps out of those websites and into their grant application?



Describing your Target Area

- **Identify the geographic boundary(ies)** where you propose to conduct activities under this grant and discuss the brownfield challenges and their impacts. Provide a brief overview of how this grant may help address those challenges and impacts.
- Within the geographic boundary(ies), **identify and describe the specific target area(s)** where you plan to focus grant activities, such as a neighborhood, district, corridor, or census tract.



Health or Welfare of Sensitive Populations

- **Identify sensitive populations** in the target area(s). Describe the health or welfare issues of such groups and discuss how this grant and reuse strategy/projected site reuse(s) will address those issues and/or help identify and reduce threats to the health or welfare of such groups.
- Describe how this grant and reuse strategy/projected site reuse(s) will address, or help identify and reduce, threats to populations in the target area(s) that suffer from a **greater-than-normal incidence of diseases or conditions (including cancer, asthma, or birth defects)** that may be associated with exposure to hazardous substances, pollutants, contaminants, or petroleum.



Sensitive populations are defined in CERCLA § 104(k)(6)(C)(x)

- Sensitive Populations:
 - Sensitive populations are those populations that are likely to experience elevated health risks from pollution, including populations based on age (young children and the elderly), pregnant women, and serious disease burden (such as, high rates of cancer, asthma, chronic respiratory disease, coronary heart disease, low birth weights, etc.), as well as low-income populations. See CERCLA § 104(k)(6)(C)(x)¹.



Mapping Tools

epa.gov/enviroatlas

epa.gov/tri

cdc.gov/places




EnviroAtlas



New to EnviroAtlas?

EnviroAtlas is an interactive web-based tool that decision-makers can use to inform policy and planning in the places where people live, learn, work and play.

[Subscribe to the EnviroAtlas bulletin](#)  to receive the latest EnviroAtlas news delivered straight to your inbox!

Human health and well-being are closely tied to the environment, which provides benefits such as clean water, clean air, and protection from natural hazards, also known as ecosystem goods and services. EnviroAtlas provides geospatial data, easy-to-use tools, and other resources related to ecosystem services, their chemical and non-chemical stressors, and human health.

About EnviroAtlas

- [About Ecosystem Services](#)
- [Frequently Asked Questions](#)
- [What's New?](#)

Interactive Applications

- [EnviroAtlas Interactive Map](#) | Discover and use hundreds of maps.
- [Eco-Health Relationship Browser](#) | Explore eco-health connections.

How to Use EnviroAtlas

- [Training and Tutorial Videos](#)
- [Example Projects that Use EnviroAtlas](#)
- [Brownfields Applications](#)
- [Health Impact Assessments](#)





Getting Started



Learn EnviroAtlas Features and Functions

EnviroAtlas provides geospatial data, easy-to-use tools, and other resources related to ecosystem services, their stressors, and human health.

This tutorial story map is a guide to learn about the features and functions of the EnviroAtlas Interactive Map. This left pane describes the available EnviroAtlas tools and features, and the right pane shows tutorial videos/images related to those features. *The videos do not have sound.*





Featured Collections

The featured collections of data below show how EnviroAtlas datasets can be used together to make decisions.

Select a featured collection to begin exploring.

Public

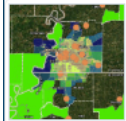
My Content



Agricultural Erosion and Sedimentation

Aids waterway remediation efforts by highlighting the interplay between erosion and sedimentation.

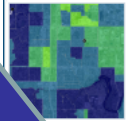
[Add to map](#)



APA Metrics for Planning Healthy Communities

This is a collection highlighting a suite of data layers that correspond to the EPA's Air Quality Criteria (AQC).

[Add to map](#)



Building a Resilient Community: A Case Study

This interactive learning module promotes community discovery using data.

[Add to map](#)



Community Resilience: An Introduction

This featured collection highlights data on community resilience (C), vulnerability (V), and natural resources (N).

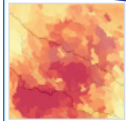
[Add to map](#)



EnviroAtlas for Brownfields

These national data layers offer a starting place for communities applying for grants and existing recipients of grants from the EPA Brownfields Program.

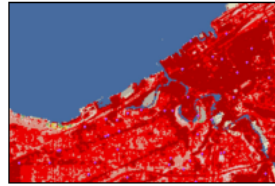
[Add to map](#)



Nitrogen Inputs to Watersheds

This collection of layers will help users explore potential wetlands restoration opportunities.

[Add to map](#)



EnviroAtlas for Brownfields

by [enviroatlas](#), [EPA](#)

Last Updated: Tue Apr 29 2025

These national data layers offer a starting place for communities applying for grants and existing recipients of grants from the EPA Brownfields Program. Curated by the EnviroAtlas team with members of the Brownfields community, these data layers help communities tell their stories and address topics related to brownfields.

[Add to map](#)

[View in GeoPlatform](#)

Description:

This featured collection was created for use in EnviroAtlas: [click here to open in the EnviroAtlas Interactive Map](#).

This featured collection is comprised of layers that cover broad topics relevant to assessing areas at-risk for environmental contamination, identifying vulnerable populations, and understanding important community characteristics. These [national data](#), coming from both EnviroAtlas and external sources, have been curated based on Brownfields Program grant guidance. This collection provides a resource to assist brownfield grant applicants and awardees in presenting their stories and plans for redeveloping their local brownfields. Grant applicants should refer to the current year's [guidance for grant funding](#).

In addition to national data, EnviroAtlas also provides very fine-scale data for selected communities, the option to view your own local data, and built-in tools that can help communities tell their stories: [Learn more about EnviroAtlas resources for Brownfields](#). Use the [EnviroAtlas Help](#) to learn how to use available features, including adding your own data and using the Compare My Area tool, which generates reports with demographic variables and various health risks, allowing for comparing your area of interest to the





Download EnviroAtlas data

1. Select an area and export individual layers
2. Download entire datasets >>>>

Data Download

The datasets below are the most recent downloadable EnviroAtlas data. For any data not listed below, please [contact us](#).

On this page:

- [National data batch downloads](#)
- [Community data batch downloads](#)

Note: The ability to download individual datasets has been temporarily disabled as we enhance the data download feature. After the upgrade, users will be able to download individual datasets and spatial data subsets with improved functionality.

National Data

- This section contains national-scale datasets. Most of these datasets are for the conterminous United States, but EnviroAtlas has begun to develop data for Alaska, Hawaii, Puerto Rico, and the U.S. Virgin Islands.
- Download the [EnviroAtlas national data download spreadsheet \(xlsx\)](#) (199.2 KB, 8/14/2025) (92 kB) for a complete list of all data layers available in the national metric tables, including additional variables not found in the Interactive Map. This spreadsheet includes file names and field names that can help you find what you are looking for in the data below.
- For more details about each variable and how they were developed, see the XML metadata files that accompany the downloads below.
- *Note: The ability to download individual datasets has been temporarily disabled as we enhance the data download feature. After the upgrade, users will be able to download individual datasets and spatial data subsets with improved functionality.*



EnviroAtlas data layers relevant to Brownfields

- Facilities (Brownfields, Tanks, Air, Water, TRI, Superfund, Hazardous Waste, Enforcement)
- Census boundaries
- Housing, Income, Low Income workers
- Floodplains, Impaired Waters
- Health and Risk, Air Toxics



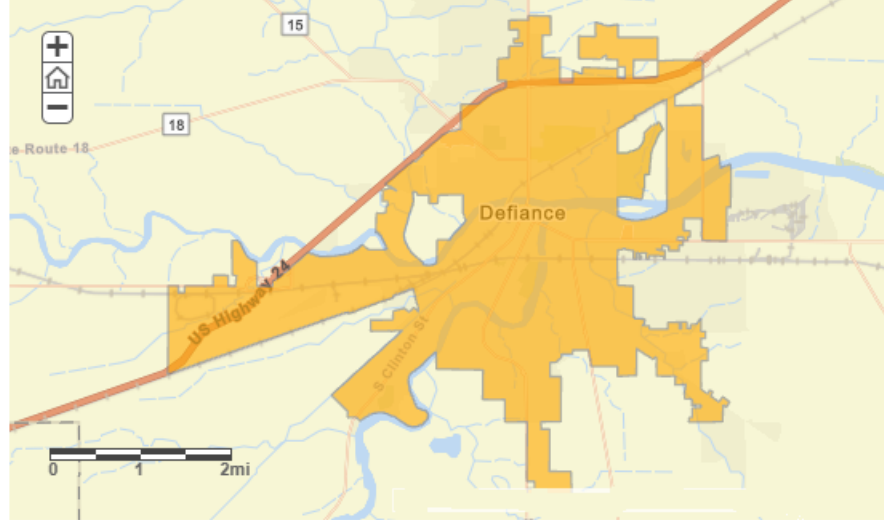
EPA's Toxic Release Inventory (TRI) has data!

- On-site releases of TRI chemicals to:
 - Air
 - Water
 - Land
- Transfer of chemical waste to off-site locations
- Other waste management:
 - Recycling
 - Treatment
 - Energy Recovery
 - Pollution prevention activities
- Data by state, county, city, zipcode



Learn about chemical releases and waste management in your community

Map of TRI Facilities in Defiance, OH



Ohio ranks **6 out of 56** states/territories nationwide based on total releases per square mile (Rank 1 = highest releases)

Quick Facts for 2022

	Defiance, OH	United States
Number of TRI Facilities:	6	22,004
Total Production-Related Waste Managed:	1.4 million lbs	31.1 billion lbs
Total On-site and Off-site Disposal or Other Releases:	371.3 thousand lbs	3.3 billion lbs
Total On-site:	353.6 thousand lbs	2.9 billion lbs
• Air:	337.8 thousand lbs	571.2 million lbs
• Water:	25 lbs	196.8 million lbs
• Land:	15.8 thousand lbs	2.1 billion lbs
Total Off-Site:	17.7 thousand lbs	424.3 million lbs

Top Five Facilities by Total Releases
Defiance, OH, 2022

JOHNS MANVILLE CORP PLANT 8
(Industry Sector 327 - Nonmetallic Mineral Product)

JOHNS MANVILLE PLANT 2
(Industry Sector 327 - Nonmetallic Mineral Product)

GENERAL MOTORS LLC GLOBAL PROPULSION SYSTEM
(Industry Sector 331 - Pr

GT TECHNOLOGIES DEFIANCE PLANT 1
(Industry Sector 336 - Transportation Equipment)

GT TECHNOLOGIES DEFIANCE PLANT 2
(Industry Sector 336 - Transportation Equipment)

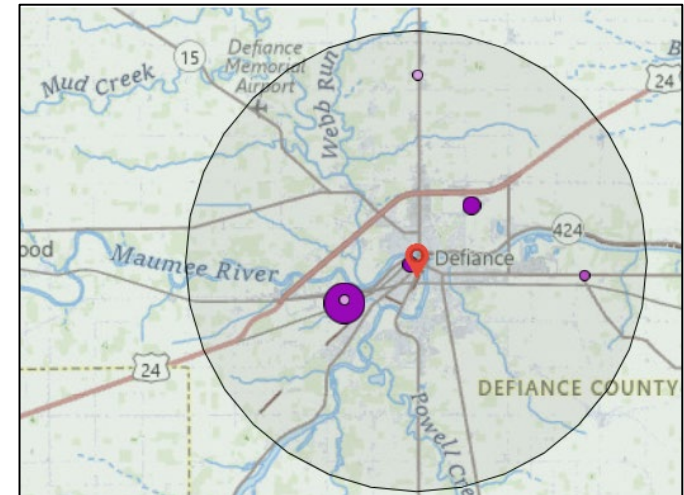
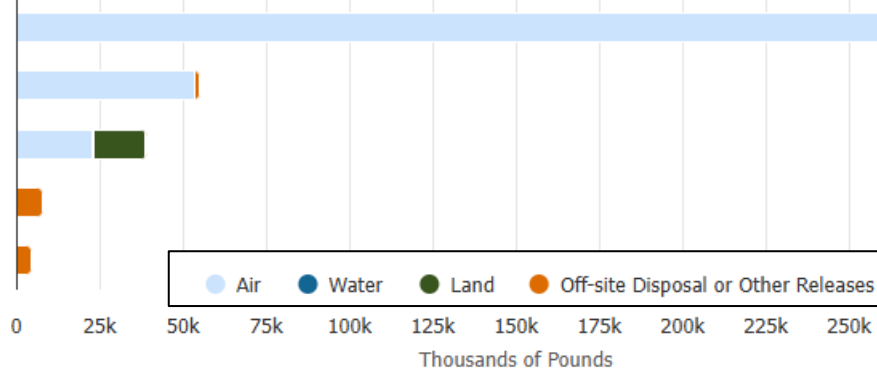
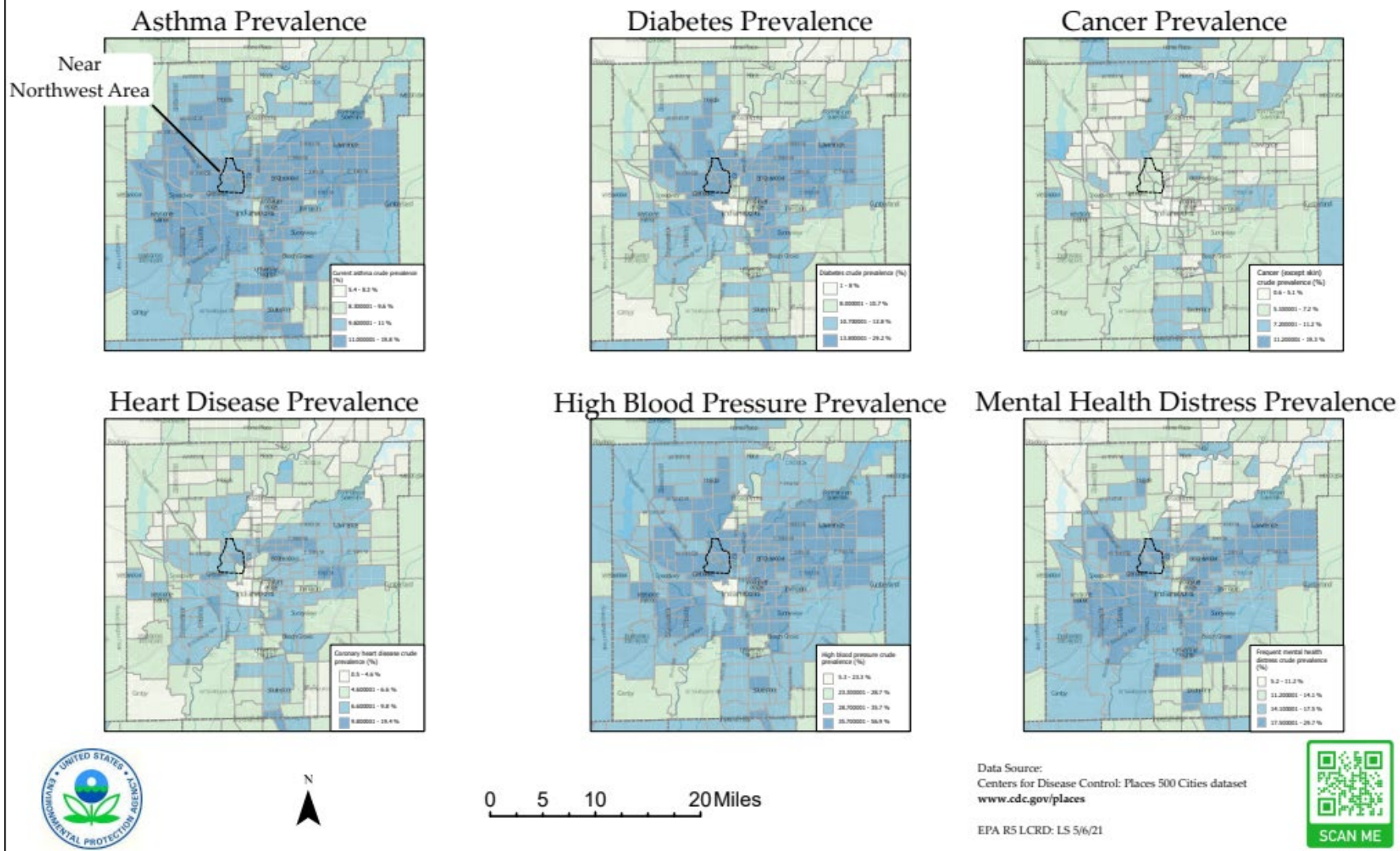


Table 1 – Priority Brownfield Sites and Impacts

Priority Site, Size, Proximity to Target Area Residents	Historic Use / Current Use & Condition / Planned Reuse (further discussed in Section 1.b.i.)	Suspected Contaminants*
Former Plastics, 320 W. Mitchell Ave -- 1.29 acres in NWC, adjoins low-income neighborhood, 600 ft. from daycare facility	Former plastics molding facility / Underutilized - buildings present / Mixed-use redevelopment	Petroleum, asbestos, metals, VOCs, PAHs
Former 1201 S. Ohio St -- 17.42 acres in I69C, adjoins low-income neighborhood, < 450 ft. from elementary school, in fed. designated floodplain	Former automotive electronics manufacturer / Underutilized - buildings present / New manufacturing redevelopment	Chlorinated VOCs
Former 501 Rogers Rd -- 11 acres in I69C, adjoins new I-69 & White River, in fed-designated floodplain	Former concrete block manufacturer / Underutilized - buildings present / Commercial redevelopment	Petroleum, VOCs, PAHs, asbestos
501 N. Park Ave -- 10 acres in NWC, adjoins municipal park near low-income neighborhood	Lumber yard / Underutilized - buildings present / Expanded park, & greenspace, residential development	Petroleum, asbestos, VOCs, SVOCs, PAHs, metals
321 W. Morgan St - 2 acres in NWC, adjoins low-income neighborhood	Former co-op & fueling facility/ Vacant land / Mixed-use redevelopment	petroleum, herbicides, pesticides, metals, VOCs
*According to the Agency for Toxic Substances and Disease Registry (ATSDR), the contaminants listed in Table 1 pose a potential threat to human health. Health threats include damage to: skin, liver, kidneys, heart, spleen; nervous, respiratory, hormonal, blood, & immune systems; may also cause neurological damage, birth defects and cancer (www.atsdr.cdc.gov).		

The CDC Places dataset has health info

Health data for Marion County & Indianapolis, Indiana





PLACES: Local Data for Better Health

CDC > Division of Population Health > PLACES Home

Compare Measures

County

Place

Search Report: paris, il

Search

Clear

0 Results

Add Place

Save As PDF

Save As CSV

Category

[Expand All](#) / [Collapse All](#)

– Health Outcomes

Measure	Data Type	United States Census 2022 Population Estimate: 333,287,557	Hibbing, MN Census 2020 Population: 16,214 Edit Remove	Clovis, NM Census 2020 Population: 38,567 Edit Remove	Salem, OH Census 2020 Population: 11,915 Edit Remove
Arthritis among adults - 2022 view definition	Crude prevalence % (95% CI)	26.6 (26.4 – 26.9)	31.9 (29.1 – 34.6)	27.3 (24.0 – 30.7)	35.8 (32.3 – 39.6)
	Age-adjusted prevalence % (95% CI)	23.3 (23.0 – 23.5)	25.6 (25.6 – 25.7)	26.6 (25.0 – 28.2)	28.2 (26.6 – 29.8)
Current asthma among adults - 2022 view definition	Crude prevalence % (95% CI)	9.9 (9.7 – 10.1)	10.8 (9.6 – 12.0)	11.7 (10.2 – 13.3)	11.2 (9.9 – 12.8)
	Age-adjusted prevalence % (95% CI)	9.9 (9.7 – 10.1)	11.1 (9.8 – 12.3)	11.7 (10.2 – 13.3)	11.4 (10.1 – 13.0)



Demo time!



Featured Collections

The featured collections of data below show how EnviroAtlas datasets can be used together to make decisions.

Select a featured collection to begin exploring.

Public

My Content



EnviroAtlas for Brownfields

These national data layers offer a starting place for communities applying for grants.

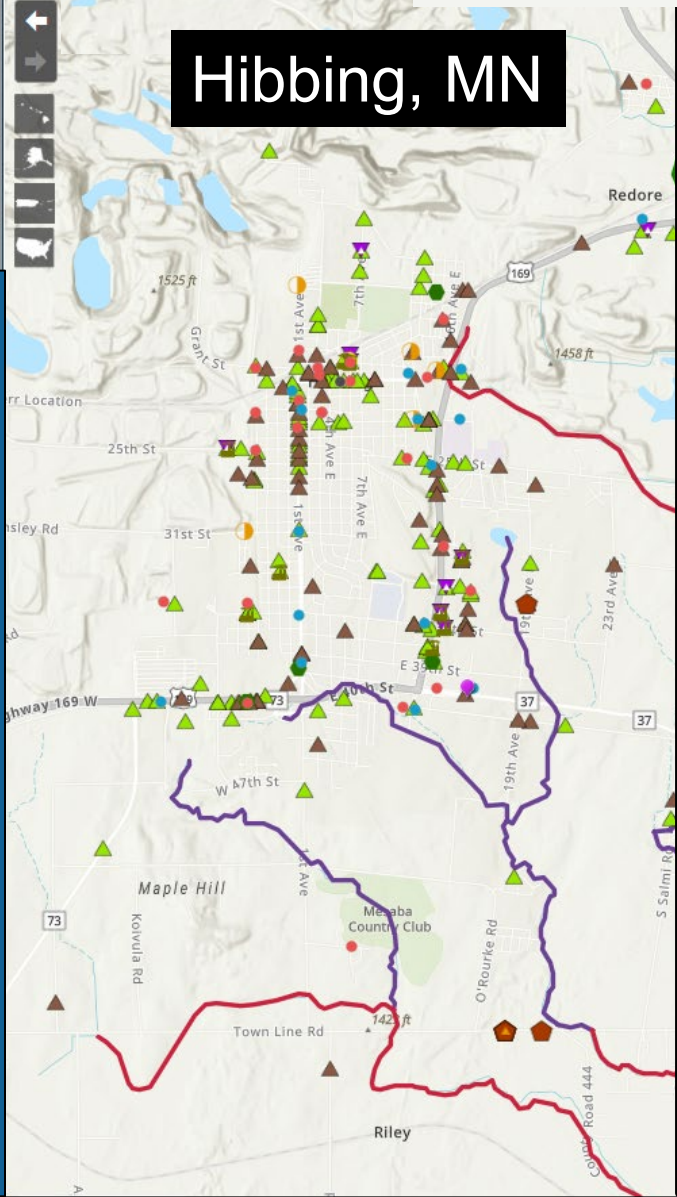
[Add to map](#)

Layers

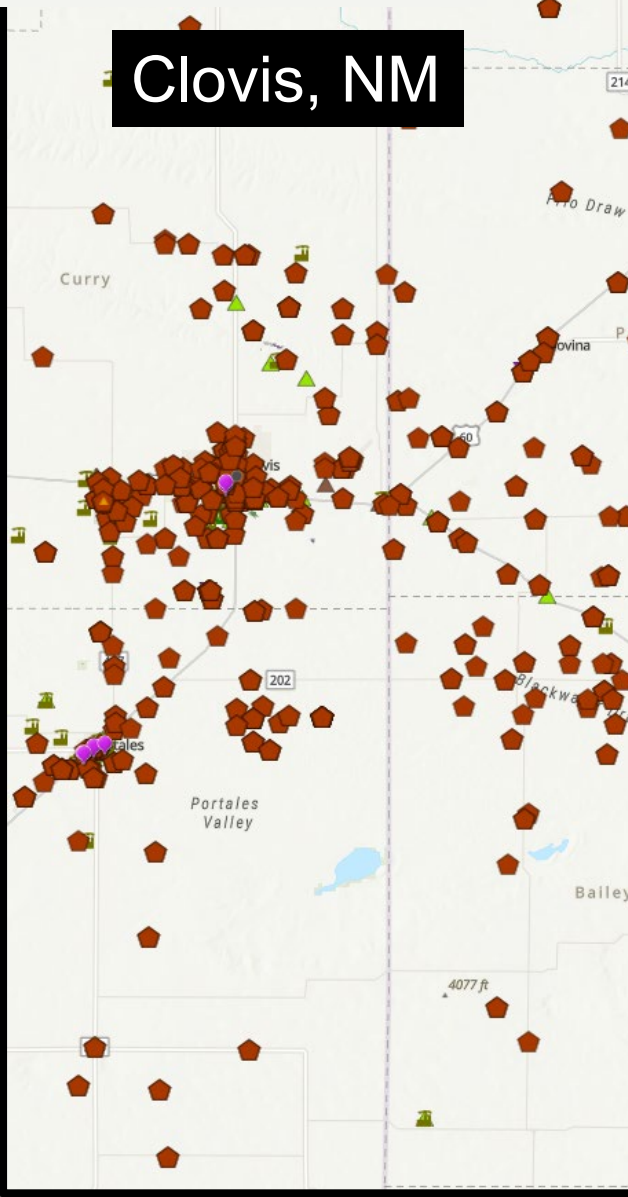
- ☒ [TC] Brownfields Properties (ACRES)
- ☒ [TC] EPA Underground Storage Tanks (non-EnviroAtlas)
- ☒ [TC] Permitted Water Dischargers (Major; NPDES)
- ☒ [TC] Permitted Water Dischargers (NPDES)
- ☒ ☒ [TC] Air Quality System (AIRS AQS)
- ☒ [TC] Integrated Compliance Information System-Air (ICIS-Air)
- ☒ [TC] Integrated Compliance Information System - Air Major (ICIS-Air Major)
- ☒ [TC] Toxic Release Inventory (TRI)
- ☒ [TC] Superfund Sites (NPL)
- ☒ [TC] Superfund Sites (SEMS)
- ☒ [TC] Hazardous Waste Sites (RCRA; Inactive)
- ☒ [TC] Hazardous Waste Sites (RCRA; Active)
- ☐ ☒ [TC] Impaired & Assessed Waters, Points (ATTAINS)
- ☒ ☒ [TC] Impaired & Assessed Waters, Lines (ATTAINS)

EnviroAtlas

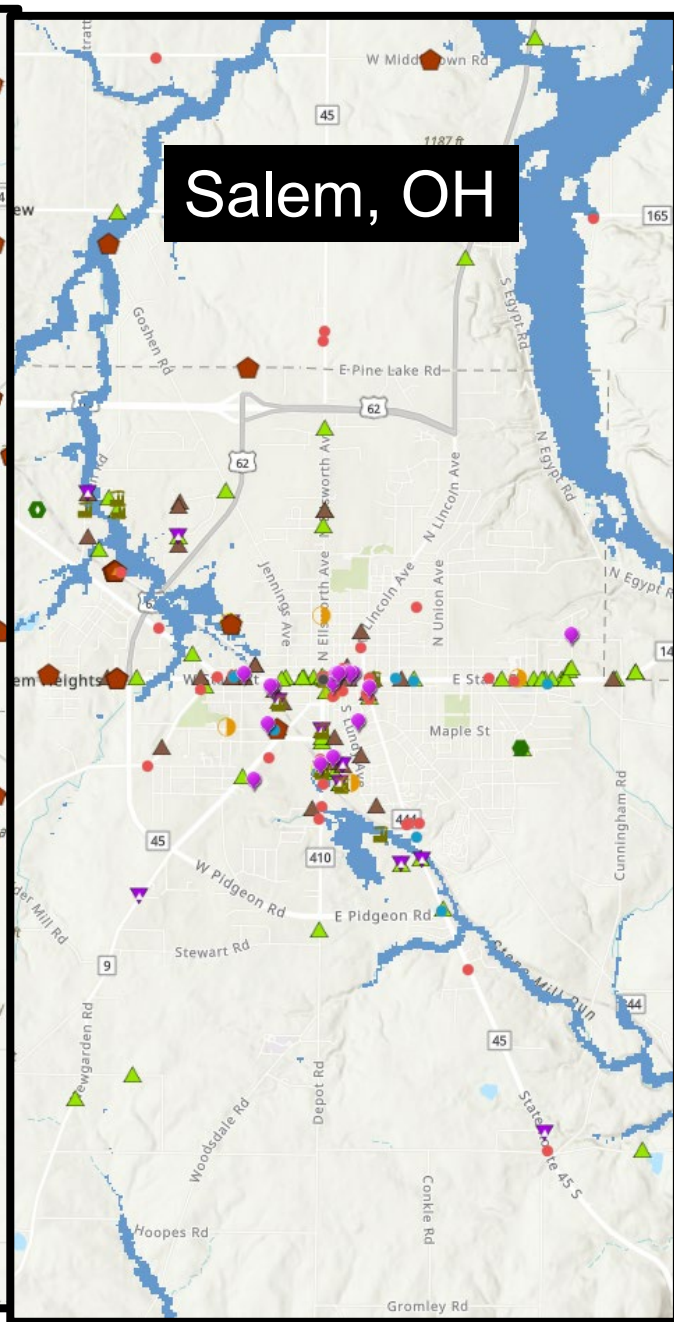
Hibbing, MN



Clovis, NM



Salem, OH





TRI - You can find out what chemicals are released or managed at facilities in your community

TRI Facility Report: HIBBING RENEWABLE ENERGY CENTER (55749HBBNG1832S)

FACILITY INFORMATIONCHEMICALSPOLLUTION PREVENTION (P2)WASTE MANAGEMENTRELEASESWATER RELEASESTRANSFERSCLASSIC VIEW

Facility Name	HIBBING RENEWABLE ENERGY CENTER	TRI ID	55749HBBNG1832S
Address	1832 6TH AVE E HIBBING, MN, 55746	FRS ID	110001442332
Mailing Name	HIBBING RENEWABLE ENERGY CENTER	DUNS Number	
Mailing Address	1902 SIXTH AVE EAST HIBBING, MN, 55746	Parent Company	NA
County	ST LOUIS	Public Contact	PAUL PLOMBON
EPA Region	5	Phone	(218) 262-7713
Latitude	47.429087	Tribe	NA
Longitude	-92.935269	BIA Tribal Code	NA
NAIC(S)	221112 Fossil Fuel Electric Power Generation	Industry Sector	2211 Electric Utilities
Last Form	2024	Foreign Parent Company Name	NA
		Foreign Parent Company DUNS Number	

*You can navigate within the map with your mouse.

TRI Facility Report: HIBBING RENEWABLE ENERGY CENTER (55749HBBNG1832S)

Chemicals and Associated Health Effects

FACILITY INFORMATIONCHEMICALSPOLLUTION PREVENTION (P2)WASTE MANAGEMENTRELEASESWATER RELEASESTRANSFERSCLASSIC VIEW

VIEW

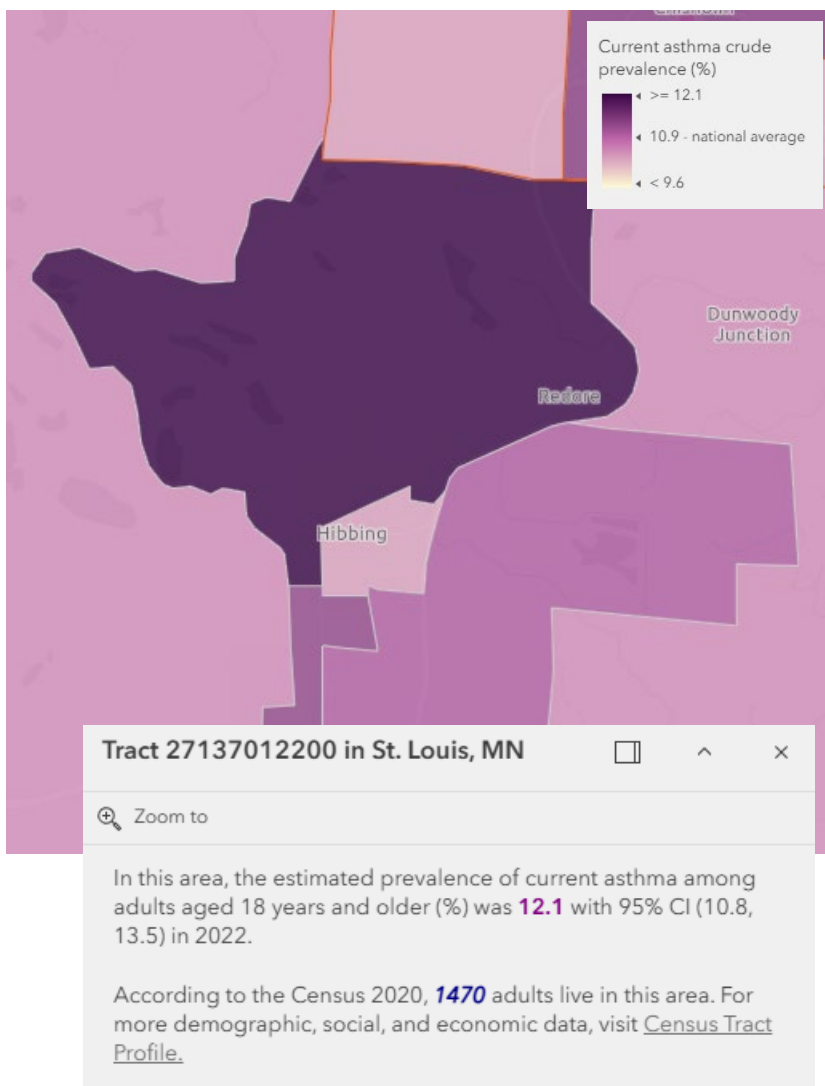
ExcelPrint

Search keyword

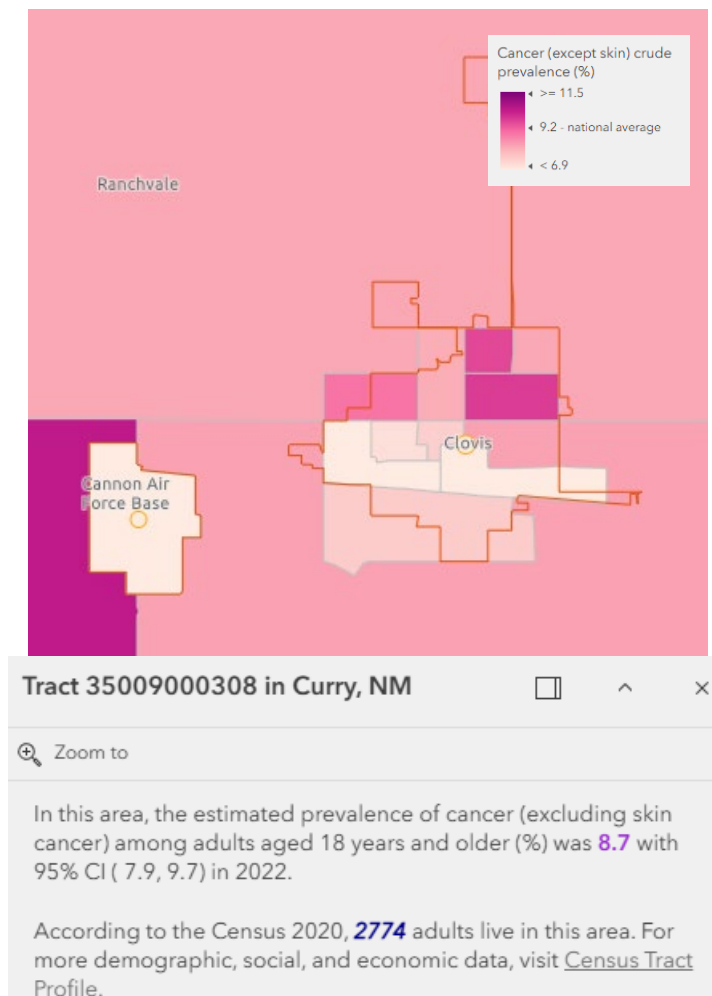
Chemical Name ↑↓	TRI Chemical ID ↑↓	Most Recent Year Reported ↑↓	Health Effects		
			Cancer	Other	Info
Dioxin and dioxin-like compounds	N150	2024	✓	✓	i
LEAD and LEAD COMPOUNDS	N420	2024		✓	i
Ammonia	7664-41-7	2023		✓	i
BARIUM and BARIUM COMPOUNDS	N040	2022		✓	i
MERCURY and MERCURY COMPOUNDS	N458	2022		✓	i

CDC Places map has 40 health measures

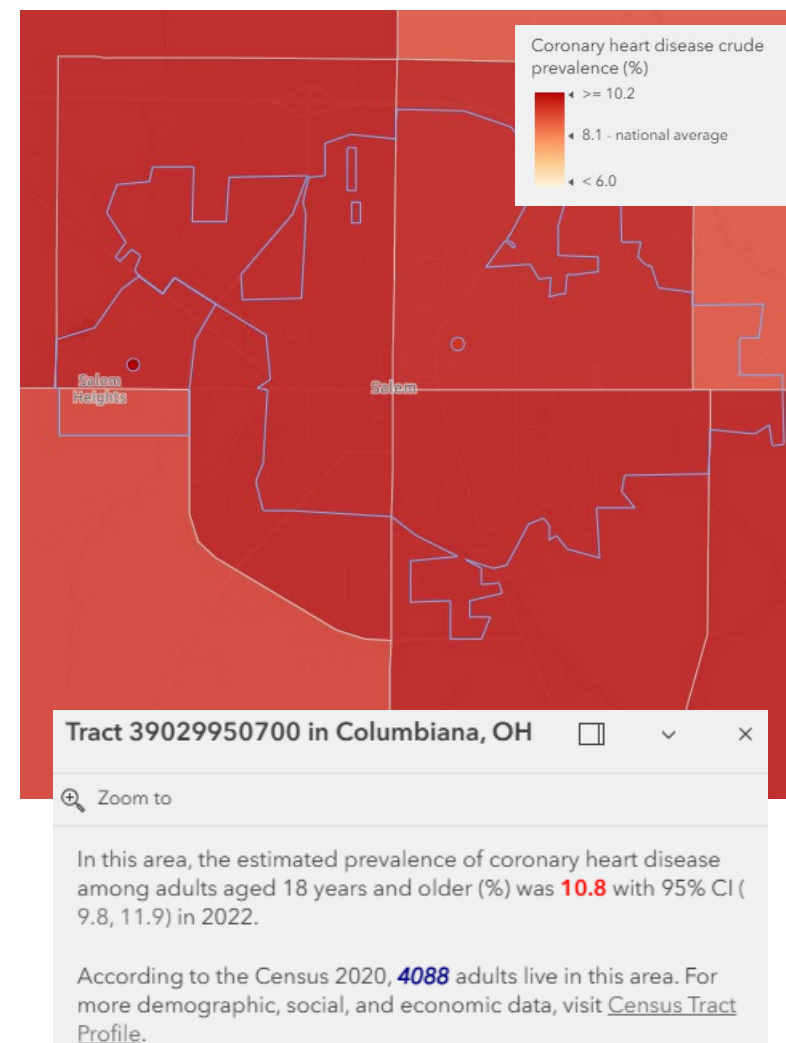
Hibbing, MN - Asthma



Clovis, NM - Cancer



Salem, OH





These mapping tools have online training and resources to help you!

epa.gov/enviroatlas

epa.gov/tri

cdc.gov/places



Questions?

Lucy Stanfield
U.S. EPA
stanfield.lucy@epa.gov