



TAB
Technical Assistance
to Brownfields

KANSAS STATE
UNIVERSITY

Brownfields 101

Fort Worth Brownfields Workshop

Kansas State University Technical Assistance to Brownfields Program
Leslie Etzel, KSU TAB Assistance Director in EPA Region 6
April 2026

What is a “brownfield”?



“A real property in which the expansion, redevelopment, or reuse may be complicated by the presence or potential presence of a hazardous substance, pollutant, or contaminant.”



Generally, Brownfield properties:

- Have liability concerns (or fear of the unknown)
- Have low acquisition costs
- Can be repurposed to meet important needs
- Are eligible for various grant funds/tax incentives

What is Brownfields Law?

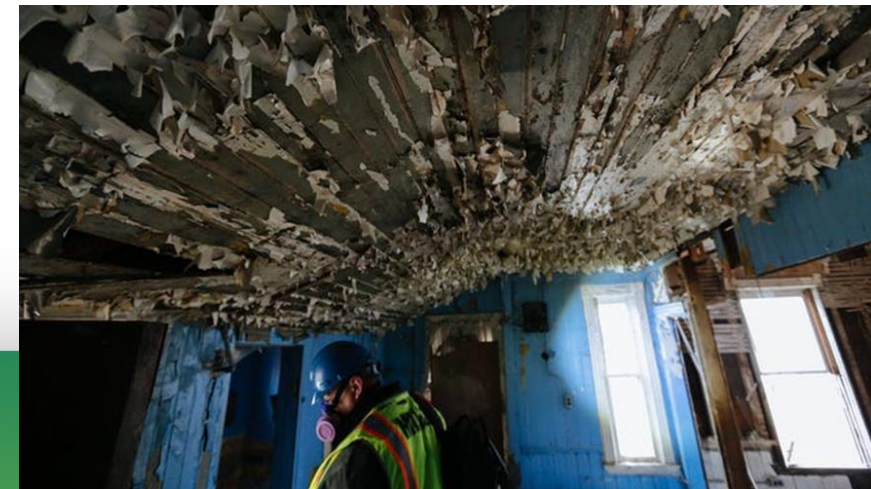
Small Business Liability Relief and Brownfields Revitalization Act (1/11/2002)

- Provides liability protections for buyers
- Provides funding for brownfield assessment and cleanup to:
 - Local governments (including Development Organizations), nonprofits, States, and Tribes
 - Requires community involvement
 - Redevelopment must benefit community (e.g. creates jobs/provides housing)



Common Brownfield Sites

- Gas stations
- Dry Cleaners
- Manufacturing Facilities
- Chemical Storage Areas
- Vehicle Repair shops
- Old buildings with:
 - Asbestos
 - Lead based paint
 - PCB caulking
 - Heating oil tanks
 - Animal waste
 - Illegal drug production residue





TAB
Technical Assistance
to Brownfields

KANSAS STATE
UNIVERSITY

Is it a brownfield?



Is it a brownfield?



Is it a brownfield?



Yes!

**An abandoned tank battery
made from wood!**

**Tanks were leaking
petroleum products on
ground**

**Tanks themselves contained
Naturally Occurring
Radiative Materials (NORM)**



Is it a brownfield?



Is it a brownfield?



Yes!

An abandoned service station with 4 leaking USTs.

Soil and groundwater cleanup were required for this site.

Is it a brownfield?



Is it a brownfield?



Yes!

Historically used as a rail yard.

Had elevated concentrations of arsenic and lead in soil.

Is it a brownfield?



Is it a brownfield?



Yes!

**Windows contained
PCB-caulking**

**Asbestos containing
material in the building.**



TAB
Technical Assistance
to Brownfields

KANSAS STATE
UNIVERSITY

How do you tackle brownfields?

Do your Environmental Due Diligence

Buying a property?

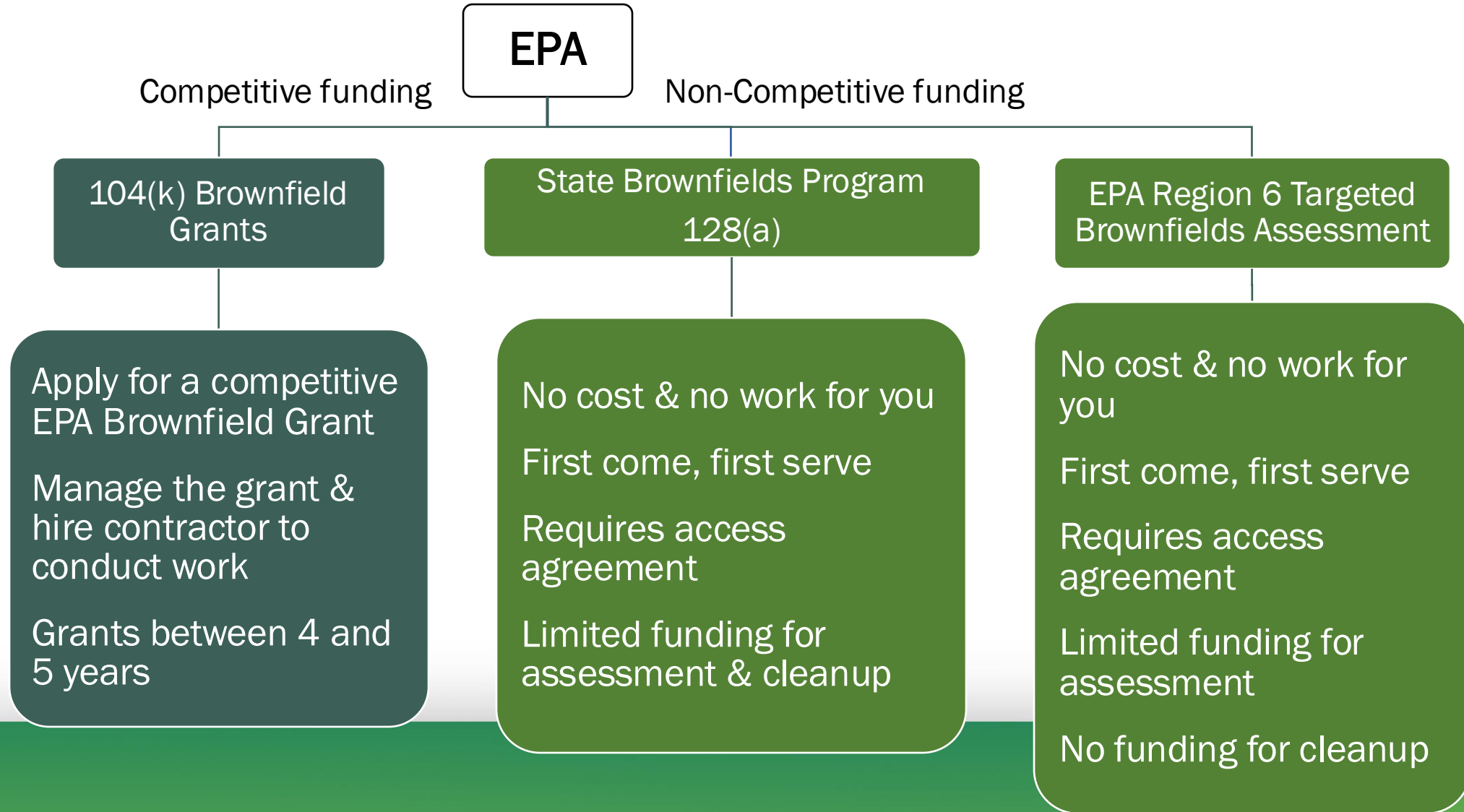


Before buying, **ALWAYS** conduct a Phase I Environmental Site Assessment!

This will establish if the property is a brownfield site or not.

Without this, you may be ineligible for brownfield funding & be liable for environmental cleanup.

Fund Site Assessment & Cleanup



Types of 104(k) Brownfield Grants

M

Multipurpose Grant

- Assessments and cleanups

A

Assessment Grant

- Phase I ESAs and Phase IIs, cleanup planning, planning activities

R

Revolving Loan Fund Grant

- Provide low or no interest loans and/or subgrants for cleanup

C

Cleanup Grant

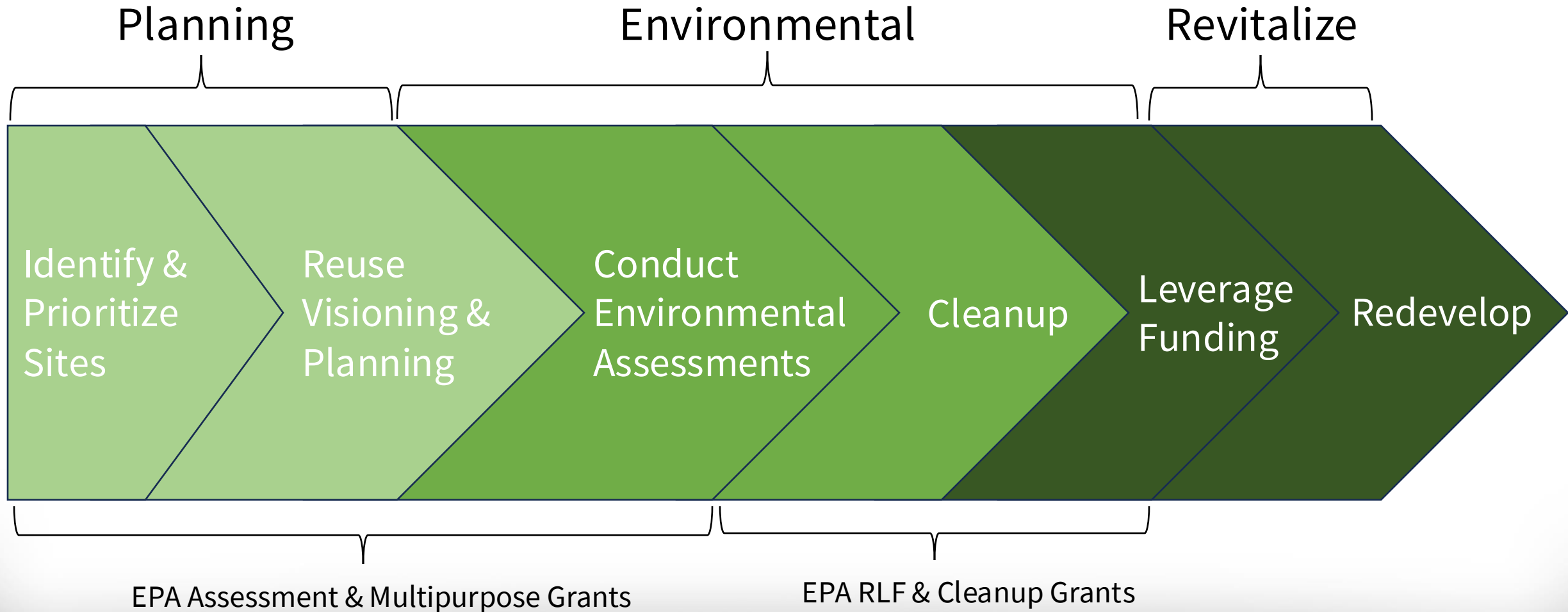
- Cleanup, health monitoring, enforcement of institutional controls

Learn more!

SCAN ME



The Brownfields Process *(generally...)*



Contact Info



Leslie Etzel

Assistant Regional Director, EPA Region 6

leslieetzel@ksu.edu

864.404.5421

Let's Connect!

Scan to get in touch with a TAB member or to join our mailing list



ksutab.org/region6



TAB
Technical Assistance
to Brownfields

KANSAS STATE
UNIVERSITY

Thank You!

