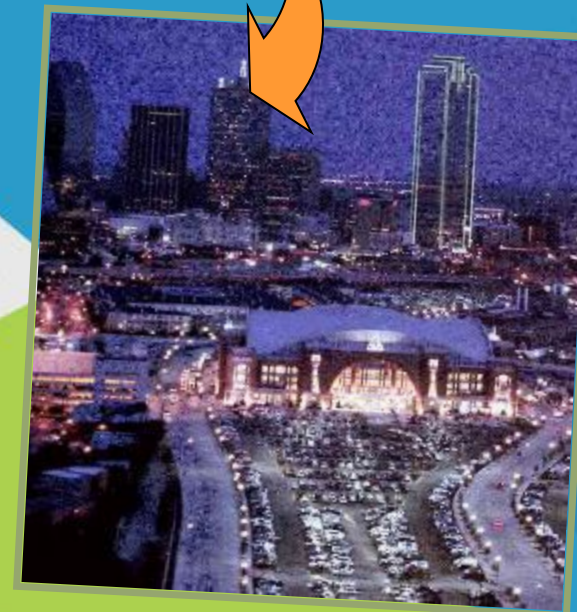
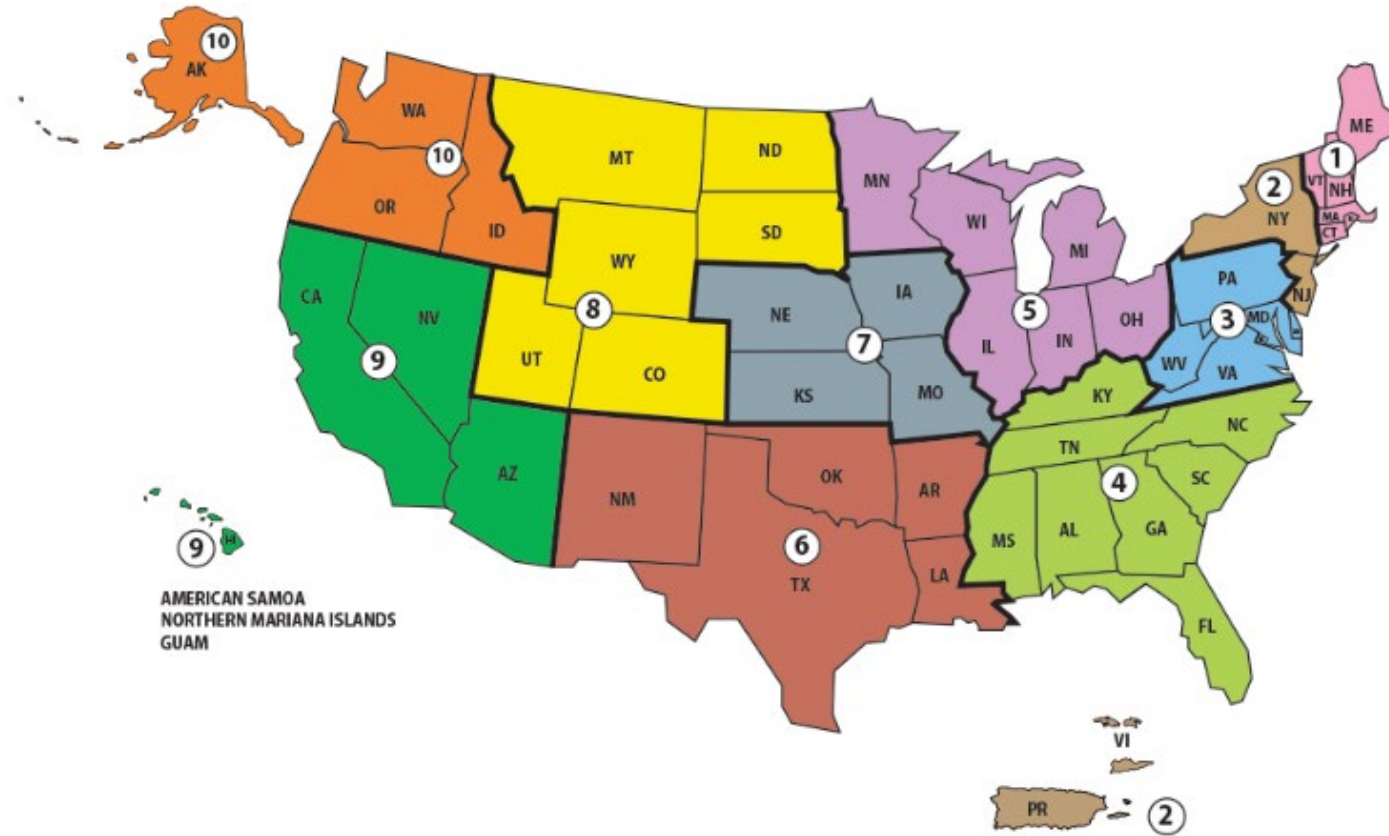


EPA Region 6 Brownfields Program



Region 6 Coverage Area



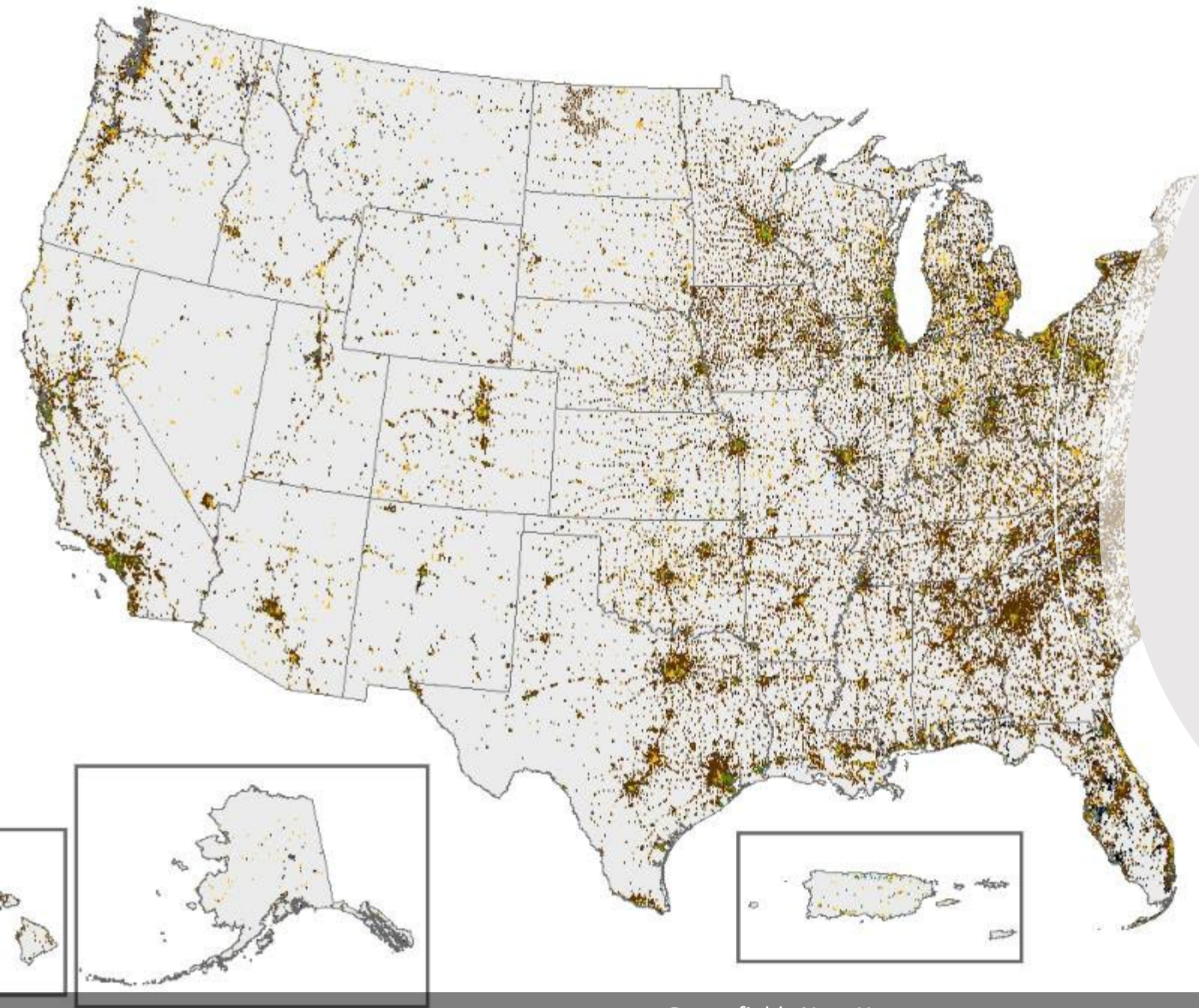
Brownfields are...

Properties where the current or future use is affected by real or perceived contamination. Environmental contamination poses a threat to the environment and human health.

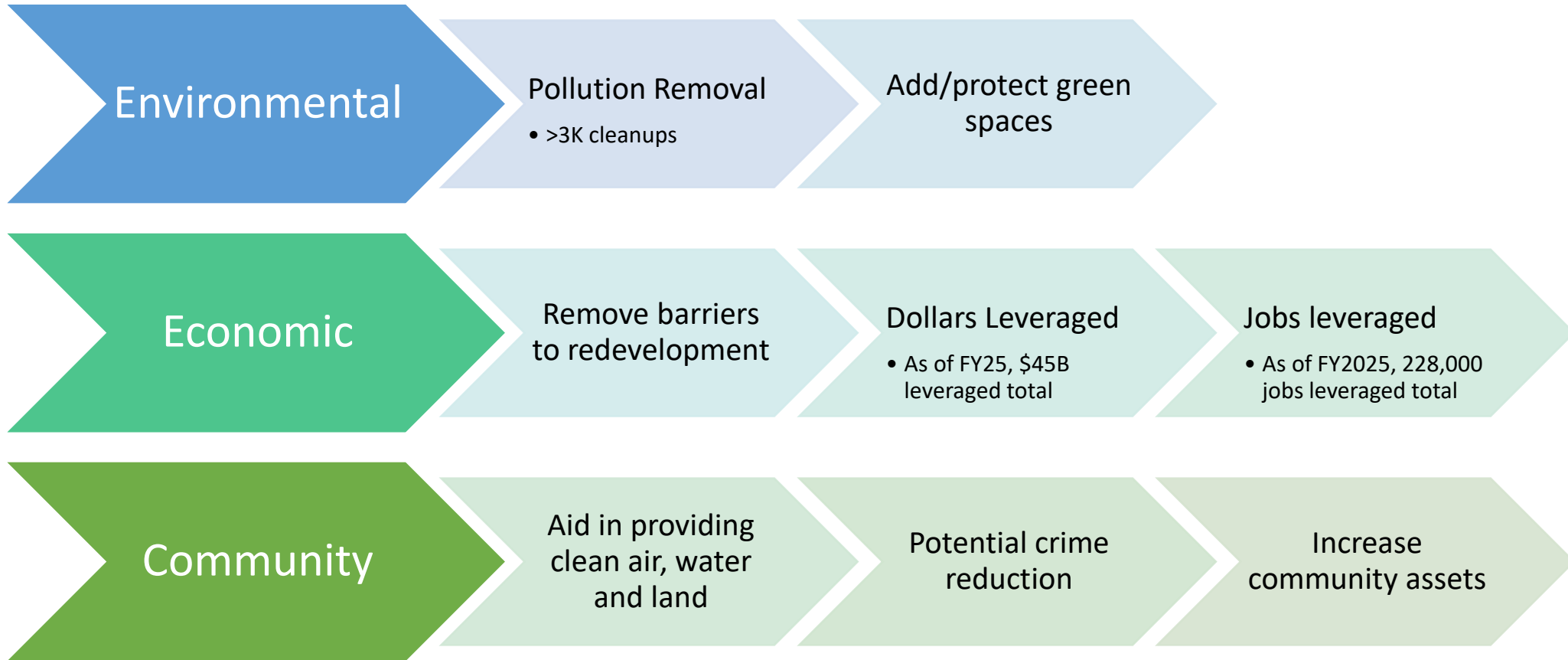


How big of a problem are brownfields, really?

2021 Update: Map shows contaminated or potentially contaminated properties that received EPA resources, as of the end of 2020 and 2015-2019 ACS Census Data



Benefits of Brownfields



Brownfields Assistance and Funding Opportunities



Non-Competitive Brownfields Services are:

- ❖ **Land Revitalization and Technical Assistance**
- ❖ **Targeted Brownfield Assessments (TBA)**
- ❖ **Technical Assistance to Brownfields (TAB)**

✓ Requests for non-competitive services are made on a year-around basis.

LRTA Services include:

- Reuse Planning
- Market Analysis
- Visioning Workshops
- Infrastructure Evaluations
- Community Health Assessments and more!

TBA Services Include:

- Phase I Environmental Site Assessment (ESA)
- Phase II ESA Sampling
- Asbestos and Lead-based Paint Surveys

Services Not Provided:

Cleanup/Remediation
Long-term Monitoring
Building Demolition

Questions? Thank you!

Marsha Lay

US EPA Region 6 Brownfields Program

Lay.Marsha@epa.gov

214-665-7562

